

APP CRS
293°

Rwy Idg
TDZE
Apt Elev
63

N/A
N/A
63

RNAV (GPS)-A

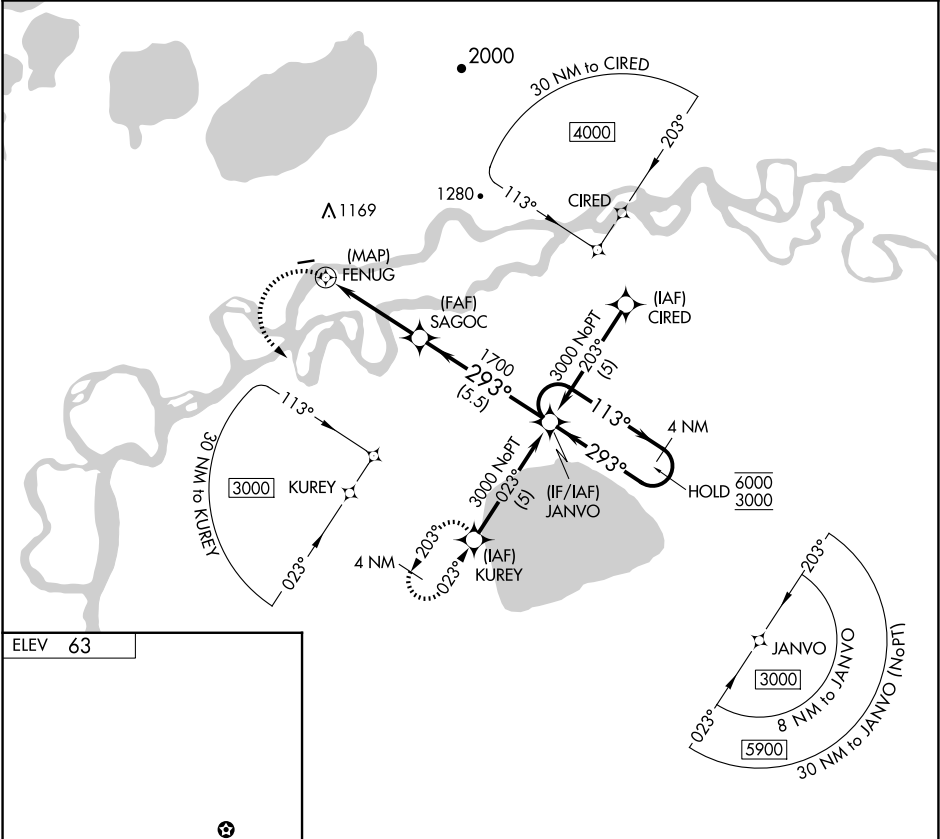
KALSAG (KLG)(PALG)

RNP APCH - GPS.

MISSED APPROACH: Climbing left turn to 3000 direct KUREY and hold, continue climb-in hold to 3000.

Procedure NA at night. Circling NA north of Rwy 7-25.

AWOS-3P 119.025	ANCHORAGE CENTER 118.15 251.05	UNICOM 122.8 (CTAF) 0
--------------------	-----------------------------------	--------------------------



ELEV 63

MRL Rwy 7-25 0

3000 KUREY

FENUG

SAGOC

JANVO

4 NM Holding Pattern

CATEGORY	A	B	C	D
CIRCLING	520-1 457 (500-1)	700-1 637 (700-1)	NA	