

STANLEY, NORTH DAKOTA

AL-9455 (FAA)

25023

WAAS CH 86248 W28A	APP CRS 282°	Rwy Idg 3900 TDZE 2242 Apt Elev 2250
--	------------------------	---

RNAV (GPS) RWY 28
STANLEY MUNI (Ø8D)

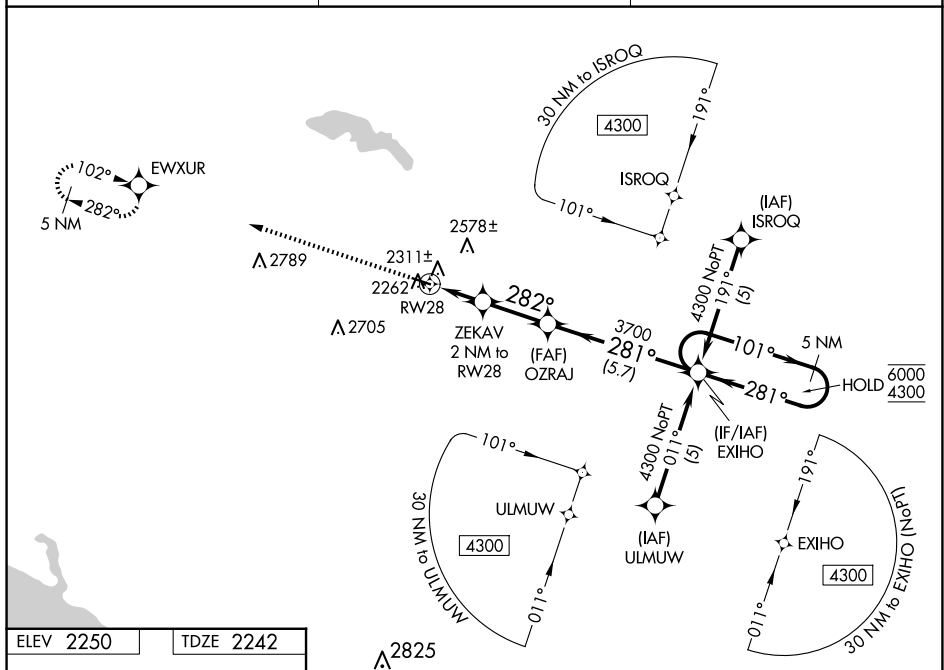
RNP APCH - GPS.

T For uncompensated Baro-VNAV systems, LNAV/VNAV
A NA below -19°C or above 54°C. Rwy 28 helicopter
visibility reduction below $\frac{3}{4}$ SM NA.

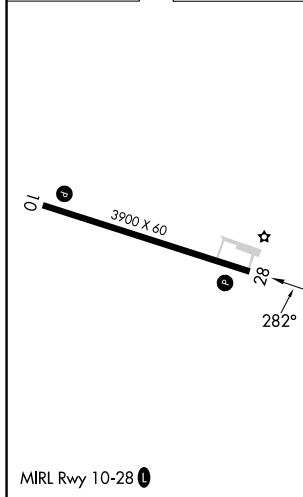
MISSED APPROACH: Climb to 5000 direct EWXUR and hold, continue climb-in-hold to 5000.

AWOS-3
121.1

MINNEAPOLIS CENTER
127.6 279.6

CTAF
122.9 L

ELEV 2250		TDZE 2242
-----------	--	-----------



EWXUR 5000
OZRAJ 3700
ZEKAV 2 NM to RW28
EXIHO 5 NM Holding Pattern
RW28 0.9 NM to RW28
GP 3.00°
TCH 40

CATEGORY	A	B	C	D
LPV DA	2492-1	250 (300-1)		NA
LNAV/VNAV DA	2492-1	250 (300-1)		NA
LNAV MDA	2580-1	338 (400-1)		NA
CIRCLING	2720-1 470 (500-1)	2940-1 690 (700-1)		NA

STANLEY, NORTH DAKOTA
Amdt 3A 23JAN25

48°18'N-102°24'W

STANLEY MUNI (Ø8D)
RNAV (GPS) RWY 28

NC-1, 10 JUL 2025 to 07 AUG 2025