

WAAS CH <b>99630</b> <b>W09A</b>	APP CRS <b>100°</b>	Rwy Idg TDZE <b>1777</b> Apt Elev <b>1779</b>
----------------------------------------	------------------------	-----------------------------------------------------

RNAV (GPS) RWY 9

LINTON MUNI (7L2)

RNP APCH - GPS.

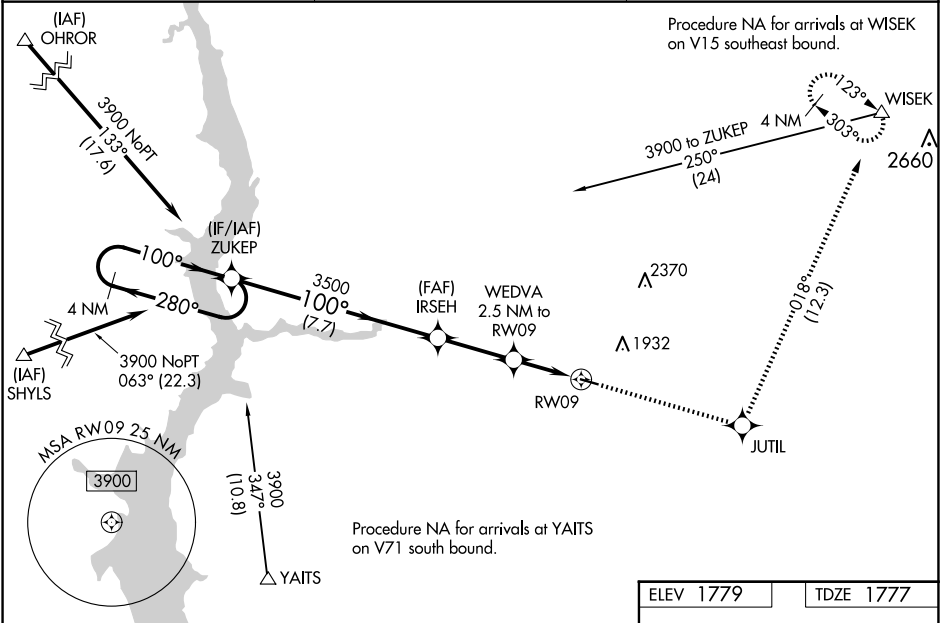
▼

▲

For uncompensated Baro-VNAV systems, LNAV/VNAV NA below -18°C or above 54°C. When local altimeter setting not received, use BIS altimeter setting and increase LPV DA to 2134 feet and all visibilities ¼ SM; increase LNAV/VNAV DA to 2198 and all visibilities ¼ SM. Increase all MDAs 120 feet and visibility LNAV Cat C ¼ SM and Circling Cat C ½ SM. Baro-VNAV and VDP NA when using BIS altimeter setting.

MISSED APPROACH: Climb to 4700 direct JUTIL and on track 018° to WISEK and hold.

ASOS-3 <b>118.175</b>	MINNEAPOLIS CENTER <b>135.25 256.7</b>	CTAF <b>122.9</b>
--------------------------	-------------------------------------------	----------------------



VGSI and RNAV glidepath not coincident (VGSI Angle 3.00/TCH 27).		4700	JUTIL	tr 018°	WISEK
4 NM Holding Pattern ZUKEP					
3900 ← 280° 100° →					
GP 3.00° TCH 40					
7.7 NM		2.8 NM	1.3	1.2	
CATEGORY	A	B	C	D	
LPV DA	2027-1	250 (300-1)		NA	
LNAV/VNAV DA	2091-1	314 (400-1)		NA	
LNAV MDA	2160-1	383 (400-1)	2160-1⅛ 383 (400-1⅛)	NA	
CIRCLING	2320-1 541 (600-1)	2400-1 621 (700-1)	2440-1¾ 661 (700-1¾)	NA	

MIRL Rwy 9-27