

WAAS CH <b>93602</b> <b>W20A</b>	APP CRS <b>196°</b>	Rwy Idg <b>4001</b> TDZE <b>88</b> Apt Elev <b>98</b>
--	------------------------	---

RNAV (GPS) RWY 20

ST MICHAEL (SMK) (PAMK)

▼

▲

▼

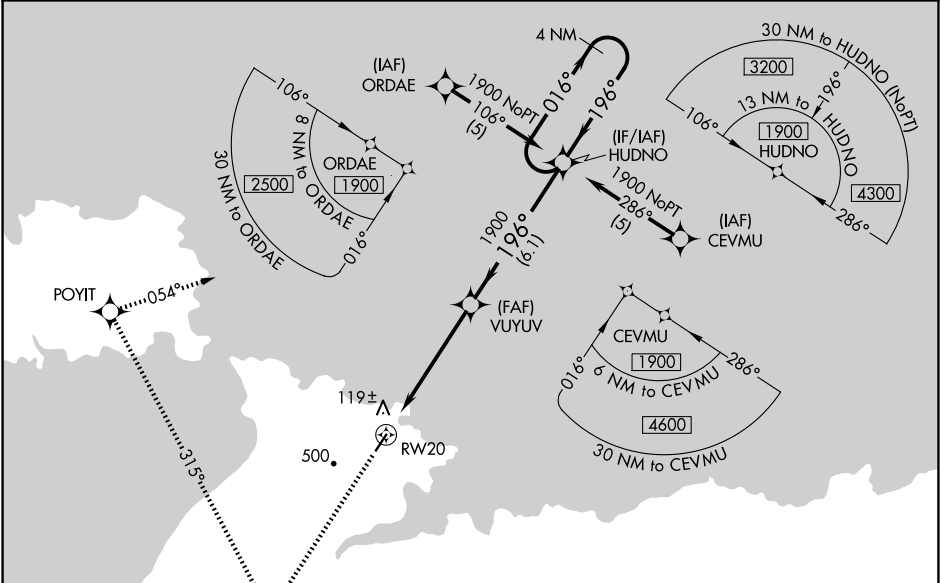
If local altimeter setting not received, use Unalakeet altimeter setting and increase all DAs/MDAs 120 feet. Circling NA west of Rwy 2-20.

DME/DME RNP-0.3 NA. Baro-VNAV NA when using Unalakeet altimeter setting. For uncompensated Baro-VNAV systems, LNAV/VNAV NA below -25°C (-13°F) or above 48°C (120°F).

VDP NA with Unalakeet altimeter setting.

MISSED APPROACH: Climb to 1900 direct JOXIX and right turn via 315° track to POYIT and right turn via 054° track to HUDNO and hold.

AWOS-3P <b>119.275</b>	ANCHORAGE CENTER <b>135.7</b>	NOME RADIO <b>122.3</b>	UNICOM <b>122.8 (CTAF) 0</b>
---------------------------	----------------------------------	----------------------------	---------------------------------



ELEV 98

TDZE 88

1900

JOXIX

POYIT

HUDNO

1900

1900

1900

1900

315° tr

054° tr

VUYUV

HUDNO

4 NM Holding Pattern

GP 3.00° TCH 45

\*LNAV only

1.3 NM to RW20

1.3 NM

4.2 NM

6.1 NM

1900

1900

1900

1900

196°

016°

196°

CATEGORY	A	B	C	D
LPV DA		338-1	250 (300-1)	
LNAV/VNAV DA		452-1¼	364 (400-1¼)	
LNAV MDA	520-1	432 (500-1)	520-1¼ 432 (500-1¼)	520-1½ 432 (500-1½)
CIRCLING	520-1 422 (500-1)	560-1 462 (500-1)	560-1½ 462 (500-1½)	660-2 562 (600-2)

MIRL Rwy 2-20 0