

APP CRS	Rwy Idg	4001
003°	TDZE	98
	Apt Elev	98

RNAV (GPS) RWY 2

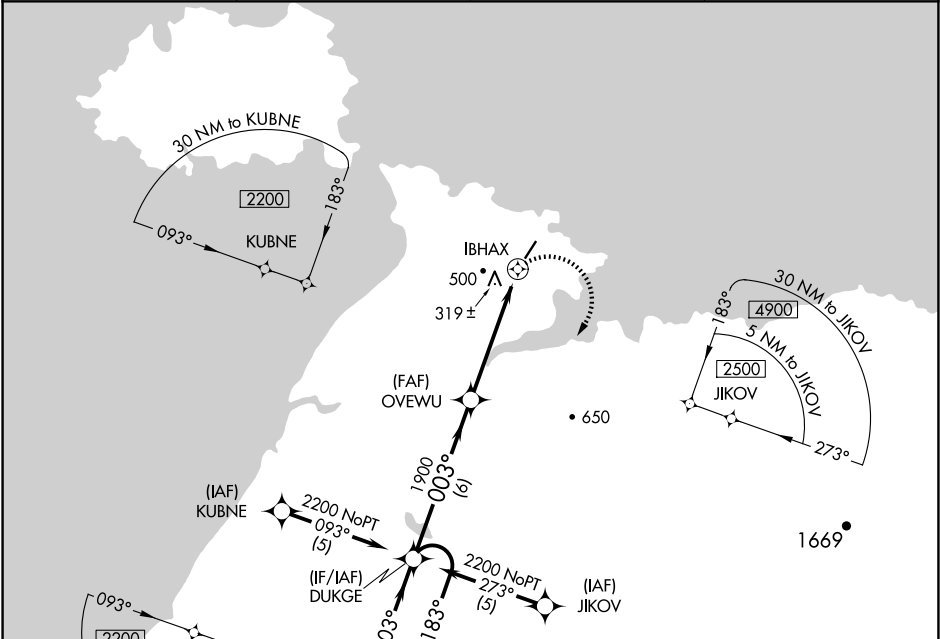
ST MICHAEL (SMK) (PAMK)

⚠

If local altimeter setting not received, use Unalakleet altimeter setting and increase all MDA's 120 feet. Circling NA west of Rwy 2-20. DME/DME RNP-0.3 NA.
* VDP NA with Unalakleet altimeter setting.

MISSED APPROACH:
Climbing right turn to 2200
direct DUKGE and hold.

AWOS-3P 119.275	ANCHORAGE CENTER 135.7	NOME RADIO 122.3	UNICOM 122.8 (CTAF) 0
--------------------	---------------------------	---------------------	--------------------------



ELEV 98

TDZE 98

4 NM Holding Pattern

DUKGE

2200

183°

003°

003°

1900

0.9 NM to IBHAX

IBHAX

3.05°

TCH 45

6 NM

4.1 NM

0.9

0.5

CATEGORY	A	B	C	D
LNAV MDA	580-1	482 (500-1)	580-1¼ 482 (500-1¼)	580-1½ 482 (500-1½)
CIRCLING	580-1	482 (500-1)	580-1½ 482 (500-1½)	660-2 562 (600-2)

20

4001 X 75

0.8% Up

2

003°

MIRL Rwy 2-20 0