

WAAS CH 61240 W09A	APP CRS 094°	Rwy Idg TDZE 1459 Apt Elev 1470
--	------------------------	---

RNAV (GPS) RWY 9

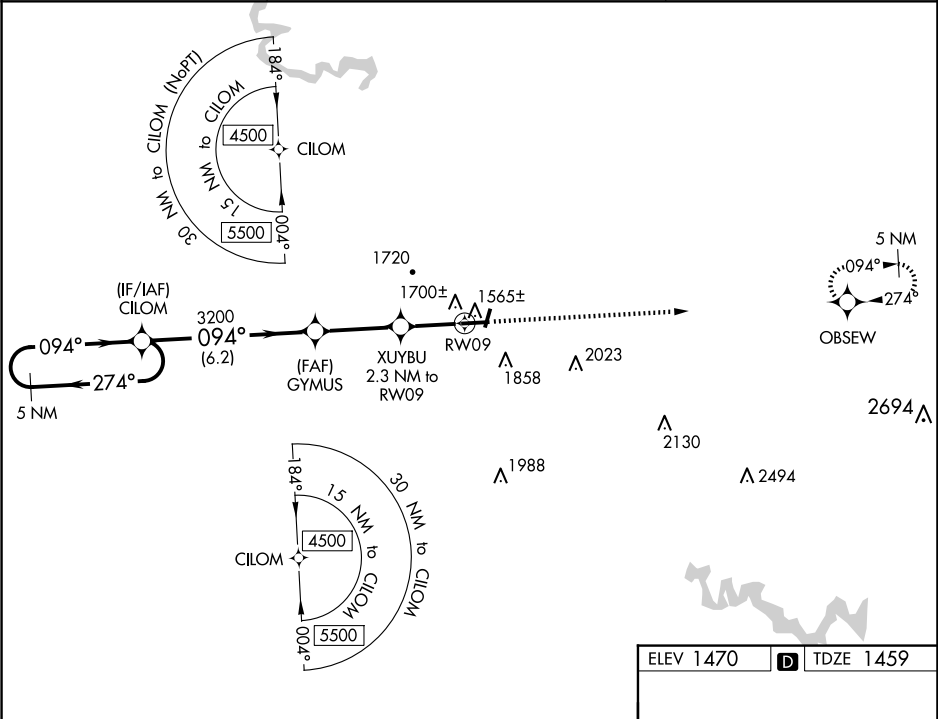
PIKE COUNTY/HATCHER FLD (PBX)

⚠

For uncompensated Baro-VNAV systems, LNAV/VNAV NA below -17°C (0°F) or above 54°C (130°F). DME/DME RNP-0.3 NA. Rwy 9 helicopter visibility reduction below ¾ SM NA. Circling NA to Rwys 2 and 20.

MISSED APPROACH: Climb to 4500 direct OBSEW and hold.

AWOS-3PT 121.225	INDIANAPOLIS CENTER 126.575 257.85	UNICOM 122.8 (CTAF) 0
----------------------------	--	---------------------------------



5 NM Holding Pattern

VGSI and RNAV glidepath not coincident (VGSI Angle 3.00/TCH 35).

4500 OBSEW

GP 3.00° TCH 40

3200

GYMUS

XUYBU 2.3 NM to RW09

*2220

*1.5 NM to RW09

RW09

6.2 NM 3.1 NM 0.8 NM 1.5 NM

*LNAV only.

094°

0.3% UP

3455 X 75

5356 X 100

0.3% UP

27

CATEGORY	A	B	C	D
LPV DA	1709-1		250 (300-1)	
LNAV/VNAV DA	1891-1½		432 (500-1½)	
LNAV MDA	1960-1	501 (500-1)	1960-1⅔	501 (500-1⅔)
CIRCLING	2120-1 650 (700-1)	2160-1 690 (700-1)	2160-2 690 (700-2)	2460-3 990 (1000-3)

HIRL Rwy 9-27 0

REIL Rwys 9 and 27 0