

LOC/DME I-PBX	APP CRS	Rwy Idg	4650
109.7	274°	TDZE	1463
Chan 34		Apt Elev	1470

ILS or LOC RWY 27

PIKE COUNTY/HATCHER FLD (PBX)

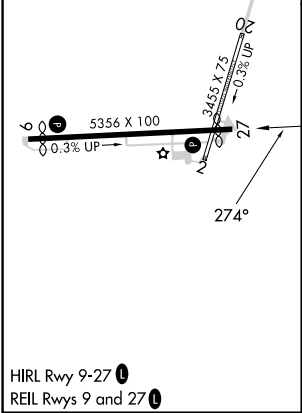
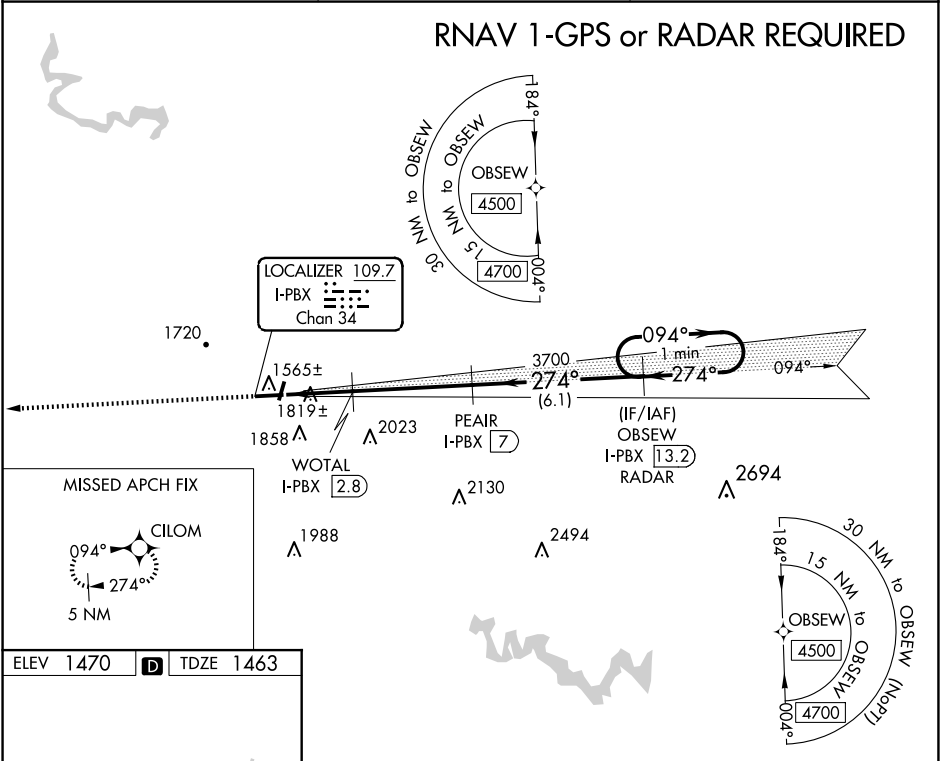
▼

▲ NA

DME and RNAV 1-GPS required.
Circling NA to Rwy's 2 and 20.

MISSED APPROACH: Climb to 4500
direct CILOM and hold.

AWOS-3PT 121.225	INDIANAPOLIS CENTER 126.575 257.85	UNICOM 122.8 (CTAF) 0
---------------------	---------------------------------------	--------------------------



4500	CILOM	PEAIR I-PBX 7	OBSEW I-PBX 13.2 RADAR	One Minute Holding Pattern
* LOC only	WOTAL I-PBX 2.8	3700	274°	094° → 4500
* I-PBX 0.2	* I-PBX 1.9	* 2320	3700	GS 3.00° TCH 47
1.8 NM	0.9 NM	4.2 NM	6.1 NM	
CATEGORY	A	B	C	D
S-ILS 27	1663-1 200 (200-1)			
S-LOC 27	2080-1	617 (700-1)	2080-1¾	617 (700-1¾)
CIRCLING	2120-1 650 (700-1)	2160-1 690 (700-1)	2160-2 690 (700-2)	2460-3 990 (1000-3)

SE-1, 10 JUL 2025 to 07 AUG 2025

SE-1, 10 JUL 2025 to 07 AUG 2025