

WAAS CH 86640 W14A	APP CRS 144°	Rwy Idg TDZE Apt Elev	5000 18 18
--	------------------------	-----------------------------	---------------------------------------

RNAV (GPS) RWY 14

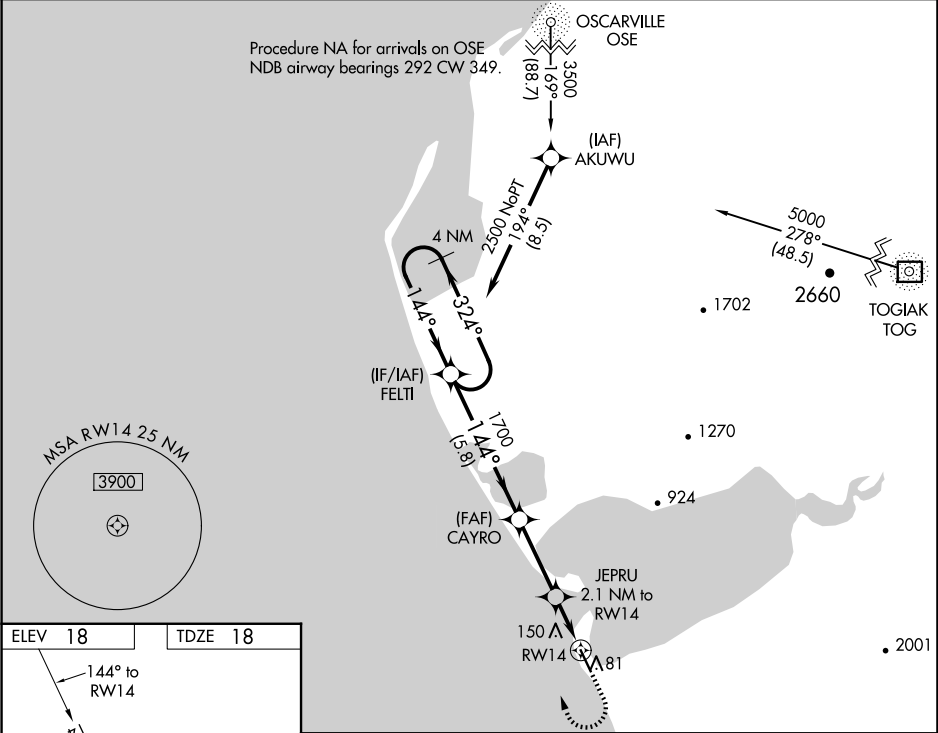
PLATINUM (PTU)(PAPM)

⚠

For uncompensated Baro-VNAV systems, LNAV/VNAV NA below -20°C (-4°F) or above 54°C (130°F). Baro-VNAV and VDP NA when using Togiak altimeter setting. DME/DME RNP-0.3 NA. When local altimeter setting not received, use Togiak altimeter setting: increase LPV DA to 371 feet; increase LNAV/VNAV DA to 424 feet and all Cats visibilities ¾ SM; increase all MDA 120 feet and increase LNAV and Circling Cat C visibility ¼ SM.

MISSED APPROACH: Climb to 420 then Climbing right turn to 2500 direct FELTI and hold.

AWOS-3P 118.375	ANCHORAGE CENTER 124.2 251.1	UNICOM 122.8 (CTAF) 0
---------------------------	--	---------------------------------



ELEV 18

TDZE 18

144° to RW14

500 X 75

32

MIRL Rwy 14-32 0

<p>4 NM Holding Pattern 2500 324° 144° 144° 1700 CAYRO JEPRU 2.1 NM to RW14 *1.1 NM to RW14 RW14 *LNAV only 5.8 NM 3.1 NM 1 NM 1.1 NM</p>				420	2500	FELTI
GP 3.00° TCH 40						
CATEGORY	A		B	C		D
LPV DA	268-1		250 (300-1)			NA
LNAV/ VNAV DA	321-1		303 (400-1)			NA
LNAV MDA	400-1		382 (400-1)	400-1½ 382 (400-1½)		NA
CIRCLING	460-1 442 (500-1)	480-1 462 (500-1)	520-1½ 502 (600-1½)		NA	