

WAAS CH <b>56244</b> <b>W02A</b>	APP CRS <b>022°</b>	Rwy Idg TDZE Apt Elev	<b>3501</b> <b>334</b> <b>339</b>
--	------------------------	-----------------------------	---

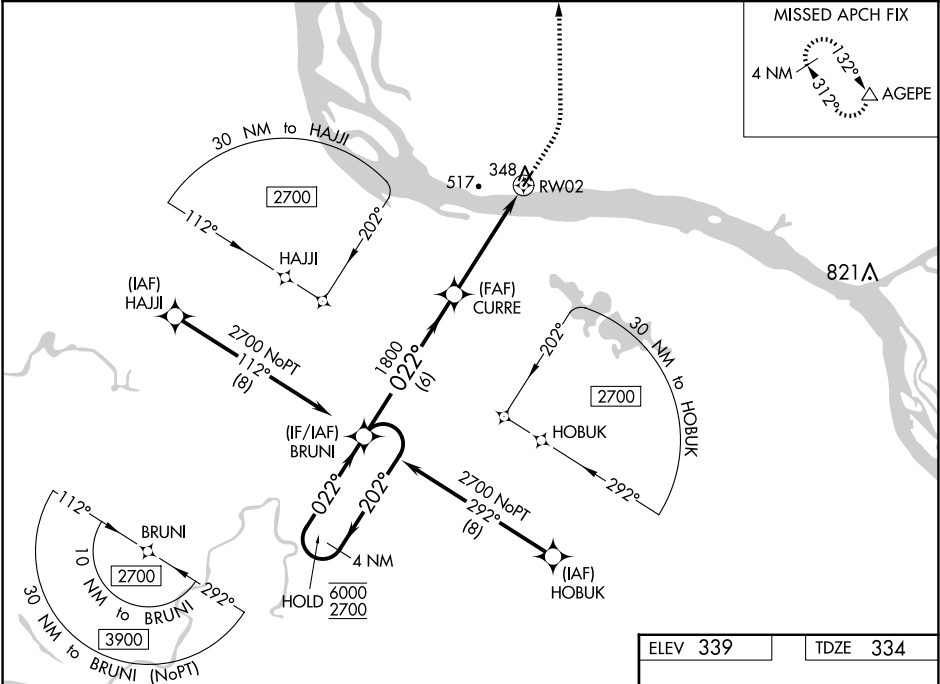
RNAV (GPS) RWY 2

MOUNTAIN VILLAGE (MOU) (PAMO)

RNP APCH.  
For uncompensated Baro-VNAV systems, LNAV/VNAV  
NA below -25°C or above 54°C.

MISSED APPROACH: Climb to 760 then climbing left turn to  
3000 direct AGEPE and hold, continue climb-in-hold to 3000.

AWOS-3P <b>118.35</b>	ANCHORAGE CENTER <b>124.0</b>	CTAF <b>122.90</b>
--------------------------	----------------------------------	-----------------------



VGSI and RNAV glidepath not coincident (VGSI Angle 3.00/TCH 25).

4 NM Holding Pattern

6000 ← 202°

2700 → 022°

GP 3.00°

TCH 30

BRUNI

CURRE

1800

1800

022°

0.9 NM to RW02

RW02

\*LNAV only

\*0.9 NM to RW02

RW02

6 NM

3.7 NM

0.9 NM

CATEGORY	A	B	C	D
LPV DA	534-1 200 (200-1)			
LNAV/VNAV DA	584-1 250 (300-1)			
LNAV MDA	600-1 266 (300-1)			
CIRCLING	700-1 361 (400-1)	840-1 501 (600-1)	840-1½ 501 (600-1½)	900-2 561 (600-2)

ELEV 339

TDZE 334

MIRL Rwy 2-20

REIL Rws 2 and 20