

APP CRS
344°

Rwy Idg
TDZE
Apt Elev
953
953

RNAV (GPS) RWY 33
WALHALLA MUNI (96D)

RNP APCH-GPS.

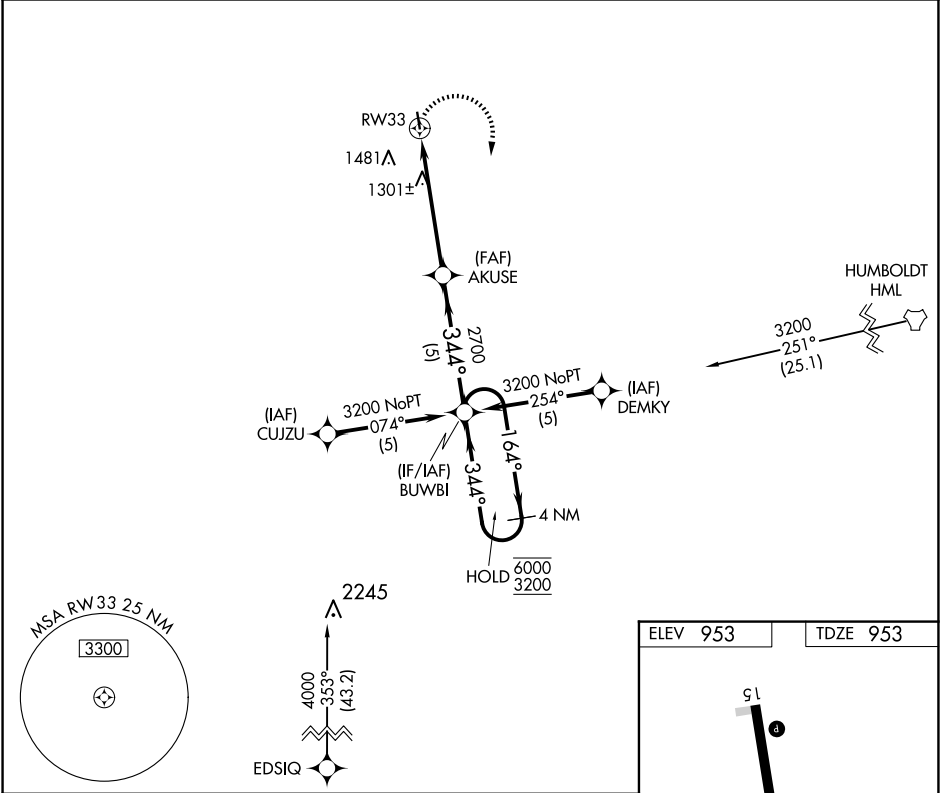
▼

▲

Rwy 33 helicopter visibility reduction below ¾ SM NA.
When local altimeter setting not received, use Hallock
altimeter setting.

MISSED APPROACH: Climbing right turn to 3200 direct BUWBI
and hold.

AWOS-3PT 118.175	MINNEAPOLIS CENTER 132.15 269.6	CTAF 122.9 0
----------------------------	---	------------------------



3200

BUWBI

VGSI and descent angles not coincident
(VGSI Angle 3.00/TCH 28).

4 NM
Holding Pattern

2.2 NM to
RW33

≤3.00°
TCH 40

AKUSE

BUWBI

164°→

6000

3200

344°

2700

2.2 NM

3.2 NM

5 NM

CATEGORY	A	B	C	D
RNAV MDA	1680-1	727 (800-1)	NA	NA
CIRCLING	1680-1 727 (800-1)	1960-1½ 1007 (1100-1½)	NA	NA

ELEV 953

TDZE 953

SL

3400 X 60

33

344° to
RW33

MIRL Rwy 15-33 0