

APP CRS
227°

Rwy Idg
TDZE
Apt Elev

6027
2429
2454

RNAV (GPS) RWY 24

CALIFORNIA CITY MUNI (L71)

RNP APCH.

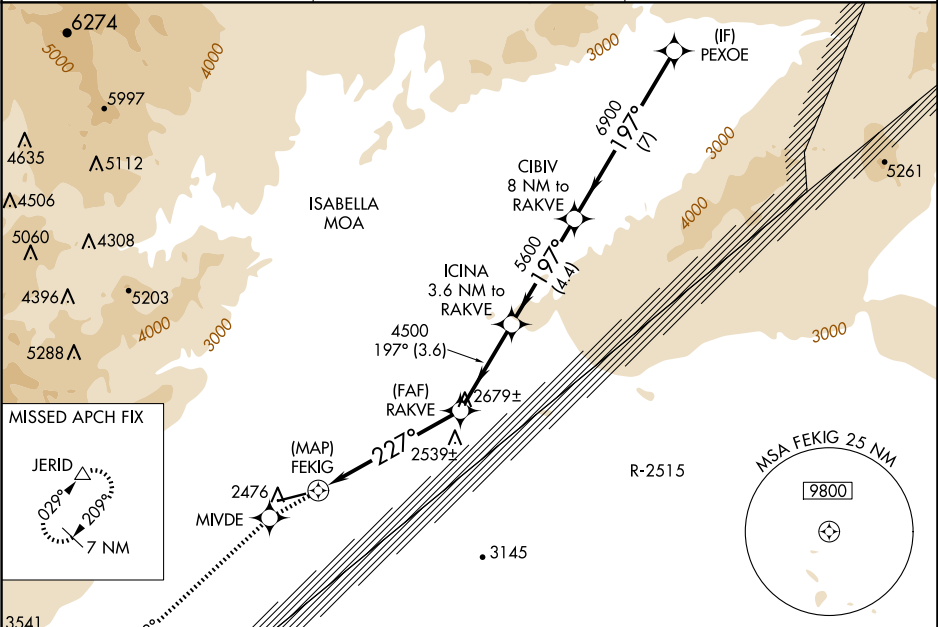
▼

NA

If local altimeter setting not received, use Edwards AFB altimeter setting and increase all MDAs 60 feet; if neither received, procedure not authorized.

MISSED APPROACH: Climb to 9000 direct MIVDE and via 213° track to JERID and hold, continue climb-in-hold to 9000.

AWOS-1 120.875	JOSHUA APP CON 133.65 348.7	UNICOM 122.7 (CTAF) 0
-------------------	--------------------------------	--------------------------



ELEV 2454

TDZE 2429

9000

MIVDE

213° tr

JERID

VGSI and descent angles not coincident (VGSI Angle 3.00/TCH 40).

PEXOE

RAKVE

ICINA

CIBIV

9000

Procedure Turn NA

FEKIG

3.05° TCH 50

227°

197°

6900

4500

5600

0.5

5.8 NM

3.6 NM

4.4 NM

7 NM

CATEGORY	A	B	C	D
LNAV MDA	2820-1	391 (400-1)		NA
CIRCLING	2960-1	506 (600-1)	3080-1¾ 626 (700-1¾)	NA

MRL Rwy 6-24 0
REIL Rwy 24 0