

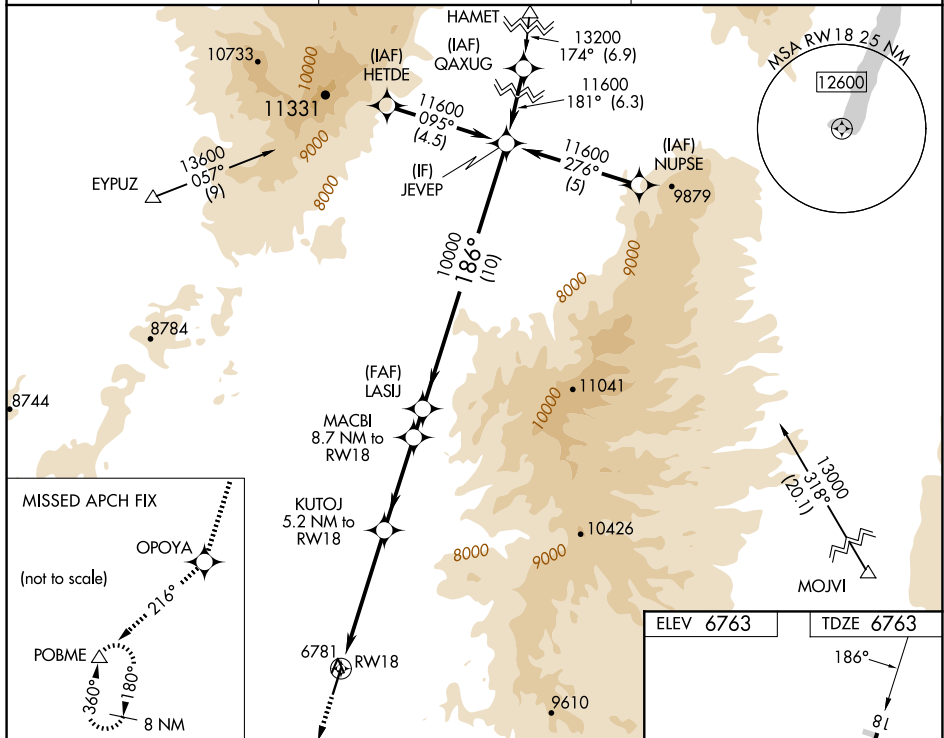
WAAS CH 82418 W18A	APP CRS 186°	Rwy Ldg TDZE Apt Elev	5700 6763 6763
--	------------------------	-----------------------------	---

RNAV (GPS) RWY 18
PANGUITCH MUNI (U55)

T For uncompensated Baro-VNAV systems, LNAV/VNAV NA below -28°C (-18°F) or above 54°C (130°F). DME/DME RNP-0.3 NA. When local altimeter setting not received use Bryce Canyon altimeter setting and increase all DA 149 feet and all MDA 160 feet, increase LPV visibility ¼ mile and increase LNAV visibility and Circling Cat B visibility ¼ mile. Baro-VNAV and VDP NA with Bryce Canyon altimeter setting.

MISSED APPROACH: Climb to 12500 direct OPOYA and on track 216° to POBME and hold, continue climb-in-hold 12500.

AWOS-3 133.125	SALT LAKE CENTER 133.6 269.25	CTAF 122.9 0
--------------------------	---	------------------------



12500 ↑	OPOYA ✦	tr 216°	POBME △		
*LNAV only.				Procedure Turn NA GP 3.00° TCH 40	
CATEGORY	A		B		D
LPV DA	6963-1 200 (200-1)				NA
LNAV/VNAV DA	7331-2 568 (600-2)				NA
LNAV MDA	7460-1 697 (700-1)				NA
C CIRCLING	7460-1 697 (700-1)				NA

ELEV 6763

TDZE 6763

186°

81

5700 X 75

36

MRL Rwy 18-36

REIL Rwy 18 and 36