

APP CRS 346°	Rwy Idg 2998
	TDZE 1241
	Apt Elev 1241

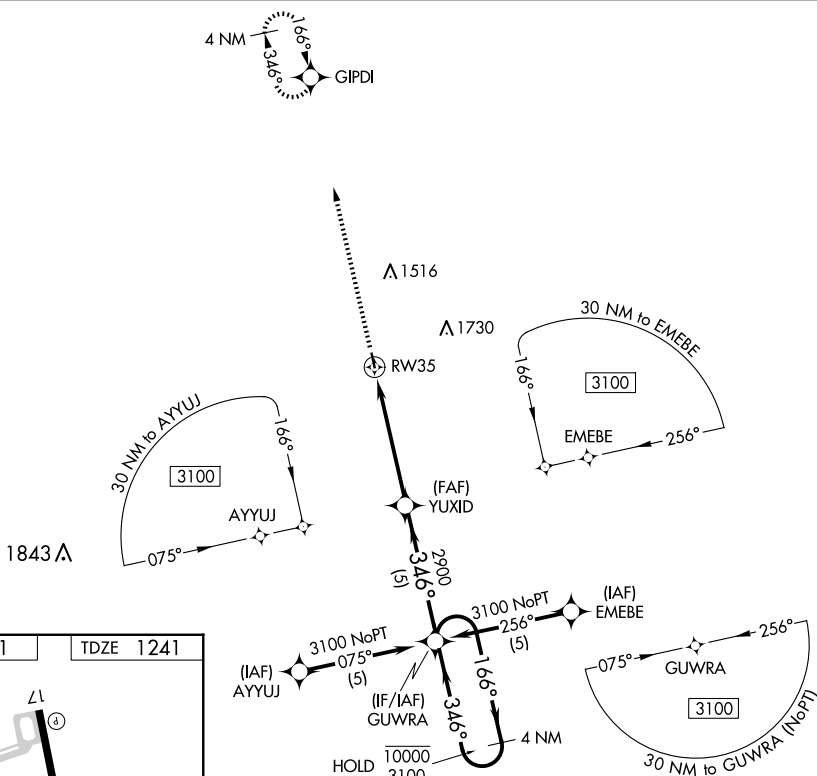
RNAV (GPS) RWY 35
SALEM MEML (K33)

RNP APCH - GPS.

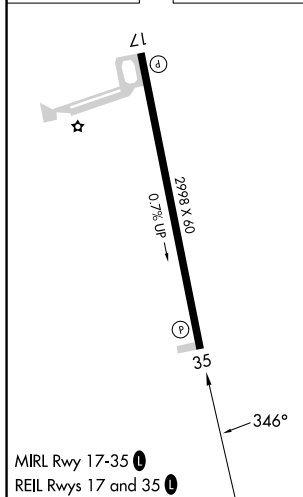
T Rwy 35 helicopter visibility reduction below $\frac{3}{4}$ SM NA. When VIH altimeter
A NA setting not received, procedure NA. Use VIH altimeter setting.

MISSED APPROACH: Climb to 3000 direct GIPDI and hold.

VIH ASOS 119.025	KANSAS CITY CENTER 128.35 284.675	CTAF 122.9 0
----------------------------	---	------------------------



ELEV 1241		TDZE 1241
-----------	--	-----------



3000 ↑	GIPDI ✦	VGS1 and descent angles not coincident (VGS1 Angle 3.00°/TCH 45).			
<p>YUXID</p> <p>3.00° TCH 40</p> <p>346°</p> <p>2900</p> <p>5.1 NM</p> <p>5 NM</p> <p>GUWRA</p> <p>4 NM Holding Pattern</p> <p>166° → 10000 ← 346° 3100</p>					
CATEGORY	A	B	C	D	
RNAV MDA	1960-1	719 (800-1)	NA		
CIRCLING	1960-1	719 (800-1)	NA		

RNAV (GPS) RWY 35