

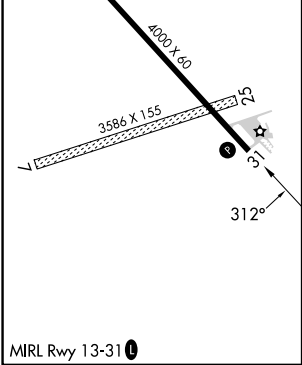
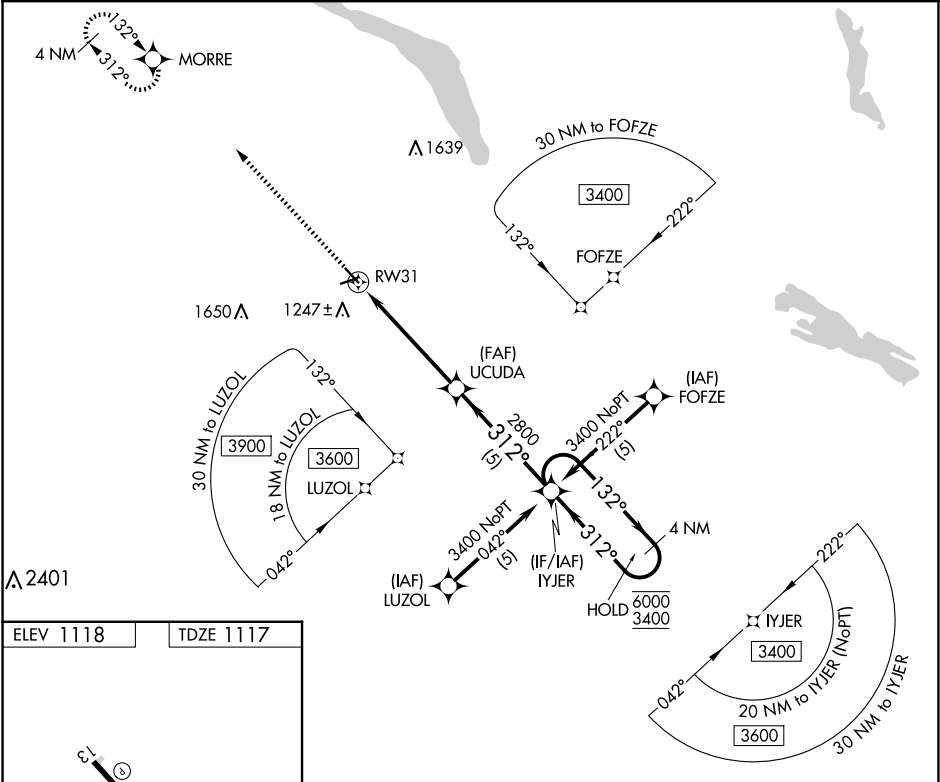
APP CRS	Rwy Idg	4000
312°	TDZE	1117
	Apt Elev	1118

RNAV (GPS) RWY 31

MILBANK MUNI (1D1)

RNP APCH - GPS.	MISSED APPROACH: Climb to 3400 direct MORRE and hold.
▼ Rwy 31 helicopter visibility reduction below ¾ SM NA. Circling Rwy 7, 25 NA. When local altimeter setting not received, use Ortonville altimeter setting and increase all MDAs 20 feet. VDP NA when using Ortonville Muni/Martinson Fld altimeter setting.	

AWOS-3P 118.9	MINNEAPOLIS CENTER 128.5 306.2	AUNICOM 122.8 (CTAF) 0
------------------	-----------------------------------	---------------------------



3400	MORRE	Visual Segment - Obstacles.			
1.8 NM	3.4 NM	5 NM	4 NM	Holding Pattern	
1.8 NM	3.4 NM	5 NM	4 NM	Holding Pattern	
CATEGORY	A	B	C	D	
LNAV MDA	1720-1	603 (700-1)	NA		
CIRCLING	1720-1	602 (700-1)	NA		

NC-1, 10 JUL 2025 to 07 AUG 2025

NC-1, 10 JUL 2025 to 07 AUG 2025