

WAAS CH 50515 W32A	APP CRS 313°	Rwy ldg TDZE Apt Elev	3600 1608 1608
--	------------------------	-----------------------------	---

RNAV (GPS) RWY 32

ROBERTSON FLD (D55)

RNP APCH - GPS.

⚠

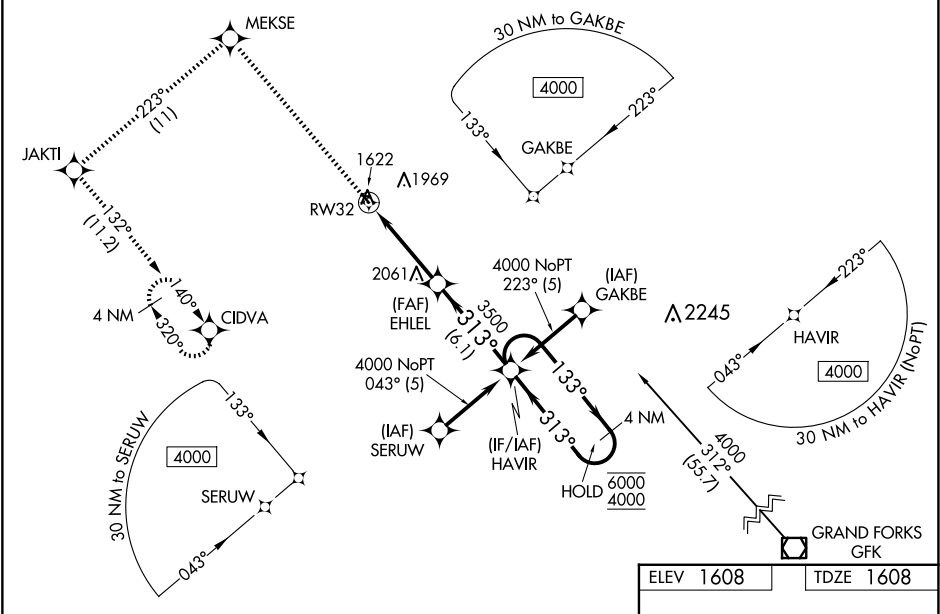
⚠

❄

Circling NA to Rws 8 and 26. Rwy 32 helicopter visibility reduction below ¾ SM NA. Baro-VNAV NA when using Devils Lake altimeter setting. For uncompensated Baro-VNAV systems, LNAV/VNAV NA below -18°C or above 54°C. When local altimeter setting not received, use Devils Lake altimeter setting and increase LPV DA to 1983 feet; increase LNAV/VNAV DA to 2284 feet and all visibilities ¼ SM. Increase all MDAs 140 feet and LNAV visibility Cat A/C ½ SM, and Circling visibility Cat A/C ½ SM.

MISSED APPROACH: Climb to 4000 direct MEKSE and on 223° track to JAKTI and on 132° track to CIDVA and hold.

AWOS-3 118.225	MINNEAPOLIS CENTER 132.15 269.6	UNICOM 122.8 (CTAF) 0
--------------------------	---	---------------------------------



4000	MEKSE	tr 223°	JAKTI	tr 132°	CIDVA	HA VIR	4 NM Holding Pattern
VGSi and RNAV glidepath not coincident (VGSi Angle 3.00/TCH 27).	EHLEL						
RW32	3500	313°	3500	133°	6000	4000	GP 3.00° TCH 40
5.7 NM	6.1 NM						
CATEGORY	A	B	C	D			
LPV DA	1858-1	250 (300-1)		NA			
LNAV/VNAV DA	2159-1½	551 (600-1½)		NA			
LNAV MDA	2360-1 752 (800-1)	2360-1¼ 752 (800-1¼)	2360-2 752 (800-2)	NA			
CIRCLING	2360-1 752 (800-1)	2360-1¼ 752 (800-1¼)	2360-2¼ 752 (800-2¼)	NA			

