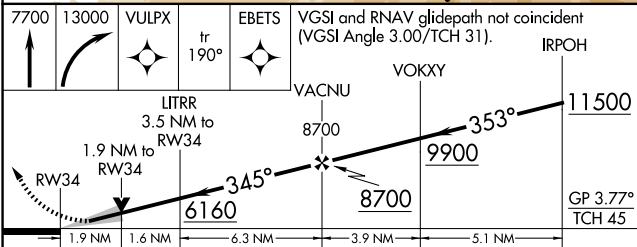
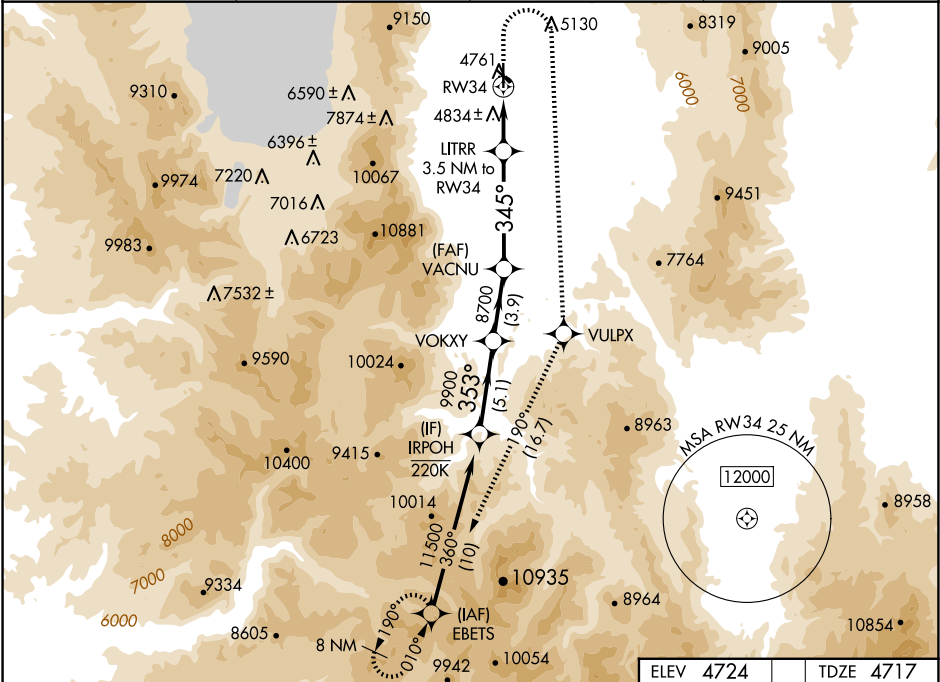


APP CRS	Rwy Ldg	7399
345°	TDZE	4717
	Apt Elev	4724

RNAV (GPS) RWY 34  
MINDEN-TAHOE (MEV)

RNP APCH - GPS.	MISSED APPROACH: Climb to 7700 then climbing right turn to 13000 direct VULPX and on track 190° to EBETS and hold.
Baro-VNAV NA. Circling NA to Rwy's 12G and 30G.	*Missed approach requires minimum climb of 310 feet per NM to 6700.

AWOS-3PT 119.325	NORCAL APP CON 119.2 279.55	CLNC DEL 133.25	UNICOM 123.05 (CTAF) 1
---------------------	--------------------------------	--------------------	---------------------------



CATEGORY	A	B	C	D
LNAV/VNAV DA*	5145-1¼	428 (500-1¼)		NA
LNAV/VNAV DA	5542-2½	825 (900-2½)		NA
LNAV MDA*	5340-1	623 (700-1)	5340-1¼ 623 (700-1¼)	NA
LNAV MDA	5720-1¼ 1003 (1000-1¼)	5720-1½ 1003 (1000-1½)	5720-3 1003 (1000-3)	NA
CIRCLING	5720-1¼ 996 (1000-1¼)	5720-1½ 996 (1000-1½)	5920-3 1196 (1200-3)	NA

