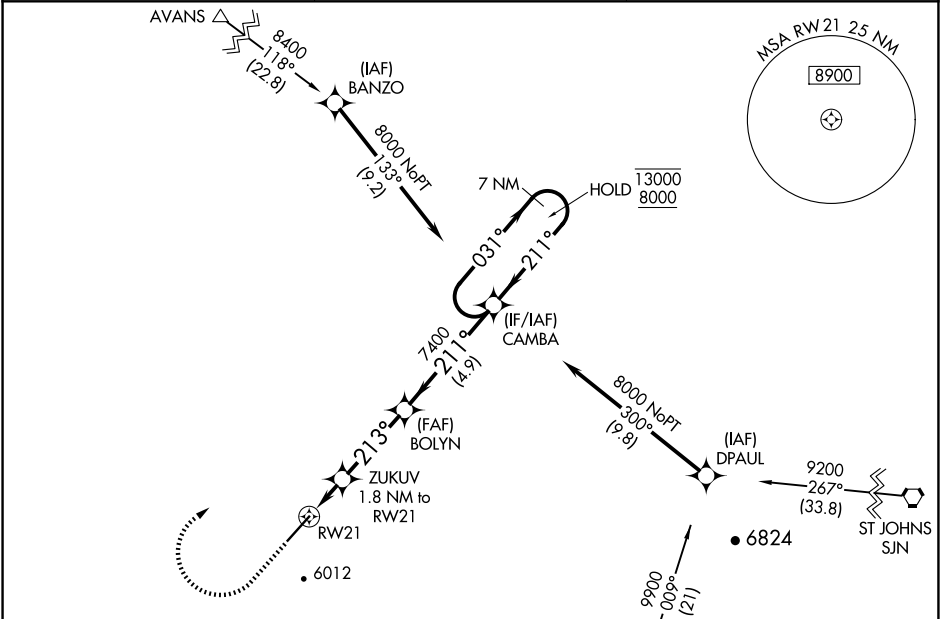


WAAS CH <b>53344</b> <b>W21A</b>	APP CRS <b>213°</b>	Rwy Idg TDZE Apt Elev	<b>7001</b> <b>5758</b> <b>5823</b>
--	------------------------	-----------------------------	---

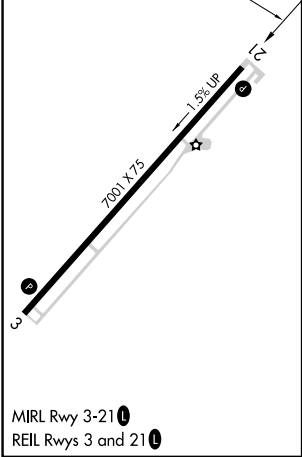
RNAV (GPS) RWY 21  
TAYLOR (TYL)

RNP APCH-GPS. When local altimeter setting not received, procedure NA. For uncompensated Baro-VNAV systems, LNAV/VNAV NA below 26°C or above 54°C.	MISSED APPROACH: Climb to 6300 then climbing right turn to 8000 direct CAMBA and hold.
---	---

AWOS-3PT <b>119.075</b>	ALBUQUERQUE CENTER <b>132.9 239.05</b>	UNICOM <b>122.7 (CTAF) 1</b>
----------------------------	---	---------------------------------



ELEV 5823	TDZE 5758
-----------	-----------



6300	8000	CAMBA	VGSI and RNAV glidepath not coincident (VGSI Angle 3.00/TCH 43).	CAMBA	7 NM Holding Pattern
ZUKUV 1.8 NM to RW21	BOLYN 7400	CAMBA 7400	031°	13000 8000	GP 3.00° TCH 52
1.3 NM to RW21	0.5 NM	3.3 NM	4.9 NM		
CATEGORY	A	B	C	D	
LPV DA	6008-3/4 250 (200-3/4)				
LNAV/VNAV DA	6008-3/4 250 (200-3/4)				
LNAV MDA	6180-1	422 (400-1)	6180-1 1/4	422 (400-1 1/4)	
CIRCLING	6320-1 497 (500-1)	6440-1 617 (700-1)	6440-1 3/4 617 (700-1 3/4)	6480-2 657 (700-2)	