

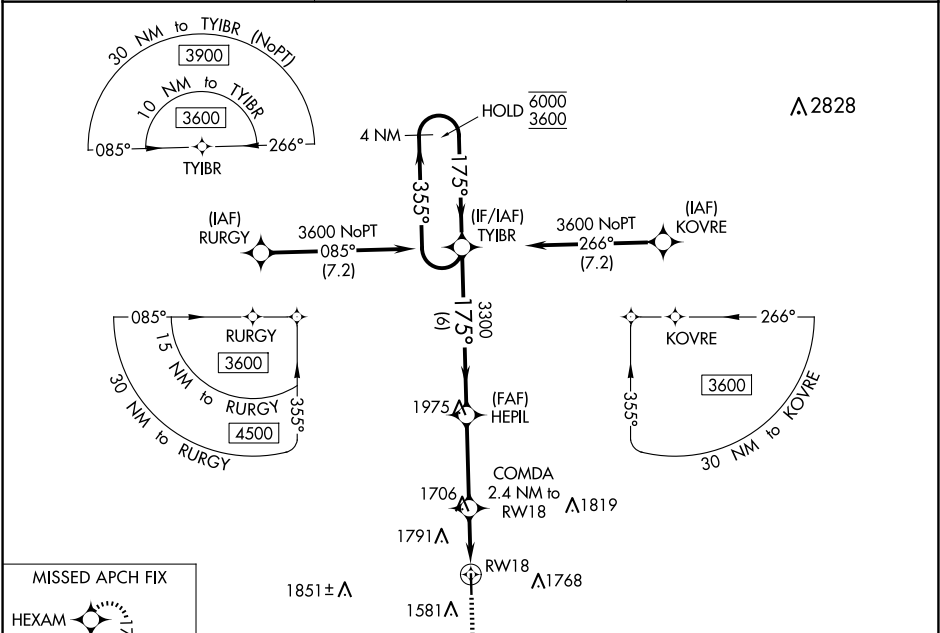
WAAS CH 86317 W18A	APP CRS 175°	Rwy Idg TDZE 1435 Apt Elev 1435
--	------------------------	---

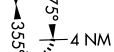

RNAV (GPS) RWY 18

QUENTIN AANENSON FLD (LYV)

RNP APCH-GPS.	MISSED APPROACH: Climb to 3200 direct HEXAM and hold.
<div><div>▼</div><div>▲</div></div> For uncompensated Baro-VNAV systems, LNAV/VNAV NA below -17°C or above 54°C.	

AWOS-3 119.825	SIOUX FALLS APP CON ★ 125.8 284.725	UNICOM 122.7 (CTAF) ①
--------------------------	---	---------------------------------



		ELEV 1435		TDZE 1435	
4 NM Holding Pattern 6000 ← 355° 3600 → 175°		VGSI and RNAV glidepath not coincident (VGSI Angle 3.00/TCH 28). HEPIL 3300 COMDA 2.4 NM to RW18 1.6 NM to RW18 RW18		3200 ↑ HEXAM 	
GP 3.00° TCH 50		2240		81 4200 X 75 36	
6 NM		3.3 NM		0.8 NM	
1.6 NM					
CATEGORY	A	B	C	D	
LPV DA	1635-1 200 (200-1)				
LNAV/VNAV DA	1847-1½ 412 (500-1½)				
LNAV MDA	1960-1	525 (600-1)	1960-1½	525 (600-1½)	
CIRCLING	1960-1 525 (600-1)	2160-1 725 (800-1)	2360-2¾ 925 (1000-2¾)	2360-3 925 (1000-3)	
MIRL Rwy 18-36			REIL Rws 18 and 36		