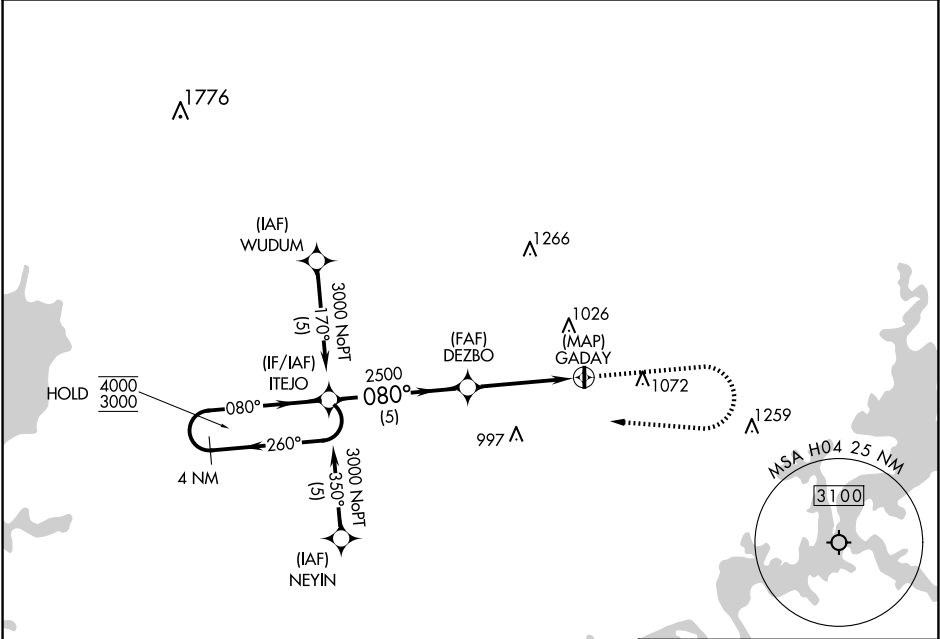


APP CRS	Rwy Idg	N/A
080°	TDZE	N/A
	Apt Elev	695

RNAV (GPS)-A
VINITA MUNI (H04)

RNP APCH - GPS.	MISSED APPROACH: Climb to 1200 then climbing right turn to 3000 direct ITEJO and hold.
▼ ▲ NA Use Claremore altimeter setting.	

GCM AWOS-3P 119.925	KANSAS CITY CENTER 128.6 282.325	122.9 (CTAF) 0
------------------------	-------------------------------------	----------------



<div>4 NM Holding Pattern</div> <div><div>ITEJO</div><div>DEZBO</div><div>GADAY</div></div> <div><div>4000 ← 260°</div><div>3000 → 080°</div><div>080°</div><div>2500</div><div>5 NM</div><div>4.2 NM</div></div> <div><div>1200</div><div>3000</div><div>ITEJO</div></div> <div><div>CATEGORY</div><div>A</div><div>B</div><div>C</div><div>D</div></div> <div><div>CIRCLING</div><div>1460-1 765 (800-1)</div><div>NA</div></div>					<div>ELEV 695</div> <div><div>41</div><div>4200 X 60</div><div>0.4% UP</div><div>35</div></div> <div>080°</div> <div>MIRL Rwy 17-35</div>
---	--	--	--	--	---

SC-1, 10 JUL 2025 to 07 AUG 2025

SC-1, 10 JUL 2025 to 07 AUG 2025