

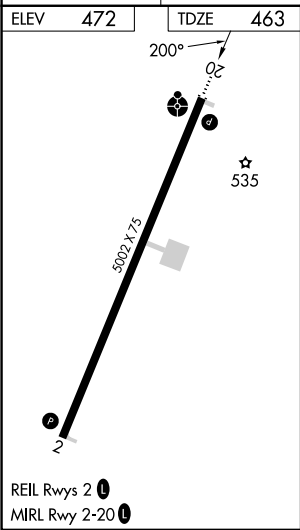
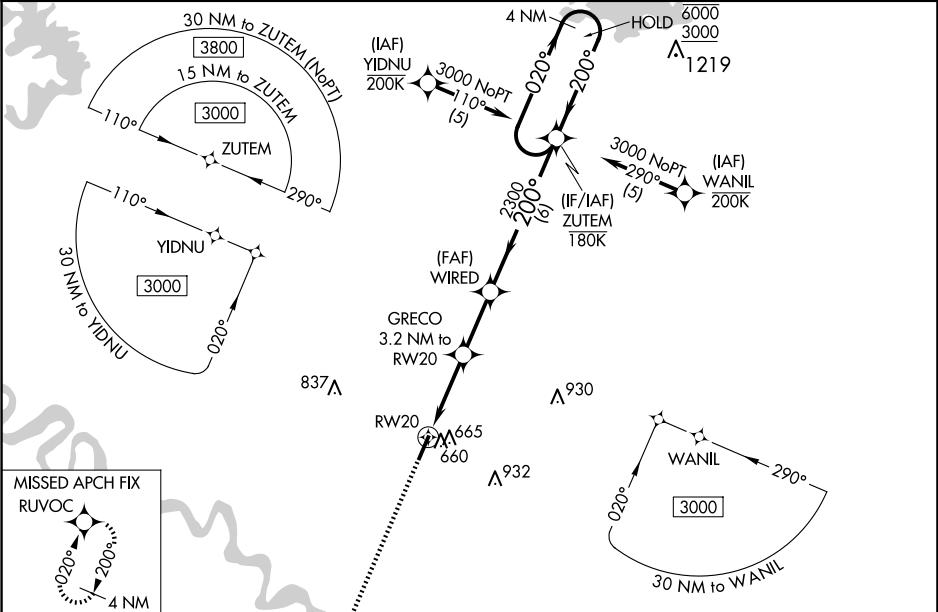
WAAS CH 69442 W20A	APP CRS 200°	Rwy Idg TDZE 463 Apt Elev 472
--	------------------------	---

RNAV (GPS) RWY 20

MC CURTAIN COUNTY RGNL (404)

RNP APCH - GPS. ⚠ Rwy 20 helicopter visibility reduction below ¾ SM NA. For uncompensated Baro-VNAV systems, LNAV/VNAV NA below -15°C or above 54°C. Inop table does not apply to LPV, and LNAV Cat A and B. For inop ALS, increase LNAV/VNAV Cat C visibility to 1¾ SM.	ODALS ⚠	MISSED APPROACH: Climb to 2500 direct RUVOC and hold.
---	------------	---

AWOS-3 120.0	FORT WORTH CENTER 123.925 269.475	UNICOM 122.8 (CTAF) 0
------------------------	---	--



2500	RUVOC		
GRECO 3.2 NM to RW20			
WIRED 2300			
ZUTEM			
4 NM Holding Pattern			
020° → 6000 ← 200° 3000			
GP 3.00° TCH 41			
← 1.4 NM 1.8 NM 2.5 NM 6 NM →			
CATEGORY	A B C D		
LPV DA	713-1 250 (300-1)	NA	
LNAV/ VNAV DA	913-1½ 450 (500-1½)	NA	
LNAV MDA	960-1 497 (500-1)	960-1¼ 497 (500-1¼)	NA
CIRCLING	1020-1 548 (600-1)	1100-1¾ 628 (700-1¾)	NA