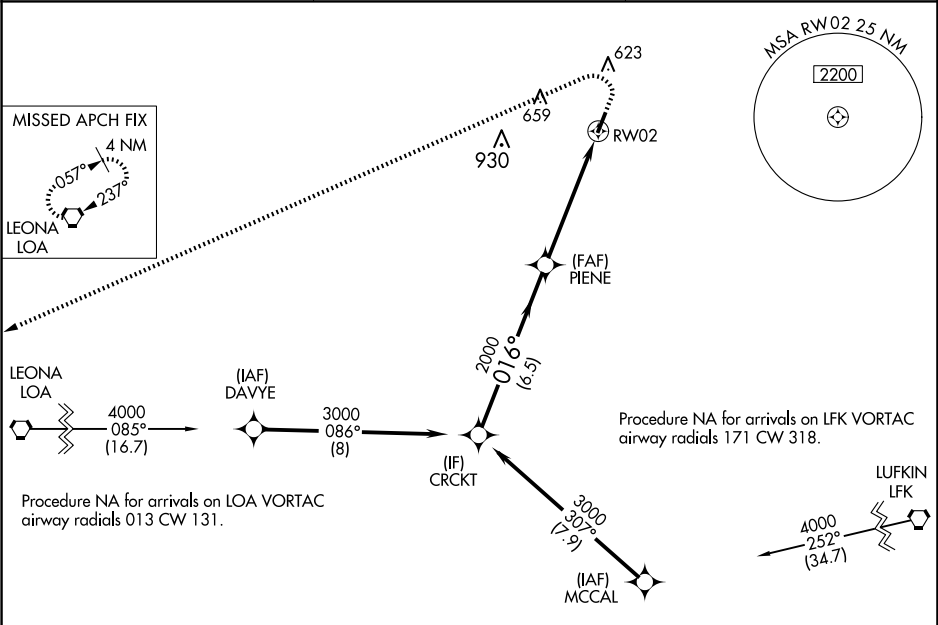


WAAS CH <b>53526</b> <b>W02A</b>	APP CRS <b>016°</b>	Rwy Idg TDZE Apt Elev	<b>4000</b> <b>341</b> <b>348</b>
--	------------------------	-----------------------------	---

RNAV (GPS) RWY 2

HOUSTON COUNTY (DKR)

<div><div><div>V</div><div>A</div></div><div>DME/DME RNP-0.3 NA. When local altimeter setting not received, use Palestine altimeter setting and increase all MDA 100 feet. Procedure NA at night. Helicopter visibility reduction below 1 SM NA.</div></div>	<div>MISSED APPROACH: Climb to 1000 then climbing left turn to 4000 direct LOA VORTAC and hold.</div>	
<div><div>AWOS-3PT 118.775</div></div>	<div><div>HOUSTON CENTER 134.8 269.6</div></div>	<div><div>CTAF 122.9 0</div></div>



				ELEV 348	TDZE 341
<div><div><div>CRCKT</div><div>PIENE</div><div>RW02</div></div><div><div>3000</div><div>2000</div><div>3.00°</div><div>TCH 35</div></div><div><div>6.5 NM</div><div>5.2 NM</div></div></div>				<div><div>1000</div><div>4000</div><div>LOA</div></div>	
CATEGORY	A	B	C	D	
LP MDA	820-1	479 (500-1)		NA	
LNAV MDA	840-1	499 (500-1)		NA	
CIRCLING	880-1 532 (600-1)	980-1 632 (700-1)		NA	
<div><div><div>20</div><div>0.5% Up</div><div>016° to RW02</div></div><div>MIRL Rwy 2-20 0</div></div>					