

|  |                        |   |
|--|------------------------|---|
| WAAS<br>CH <b>45721</b><br><b>W23A</b> | APP CRS<br><b>233°</b> | Rwy Idg <b>5494</b><br>TDZE <b>210</b><br>Apt Elev <b>215</b> |
|--|------------------------|---|

# RNAV (GPS) RWY 23

## EARLY COUNTY (BIJ)

RNP APCH - GPS.

**⚠** Inop table does not apply to LPV, LNAV/VNAV and LNAV Cat A/B. For uncompensated Baro-VNAV systems, LNAV/VNAV NA below -15°C or above 54°C. Rwy 23 helicopter visibility reduction below  $\frac{3}{4}$  SM NA. When local altimeter setting not received, use Barinidger altimeter setting; increase LPV DA to 578 feet, LNAV/VNAV DA to 587 feet; increase all MDAs 80 feet and visibility LNAV Cat C/D  $\frac{1}{8}$  SM and Circling Cat C/D  $\frac{1}{4}$  SM. For inop ALS, increase LNAV Cat C/D visibility to  $\frac{1}{8}$  SM. Baro-VNAV and VDP NA when using Barinidger altimeter setting.

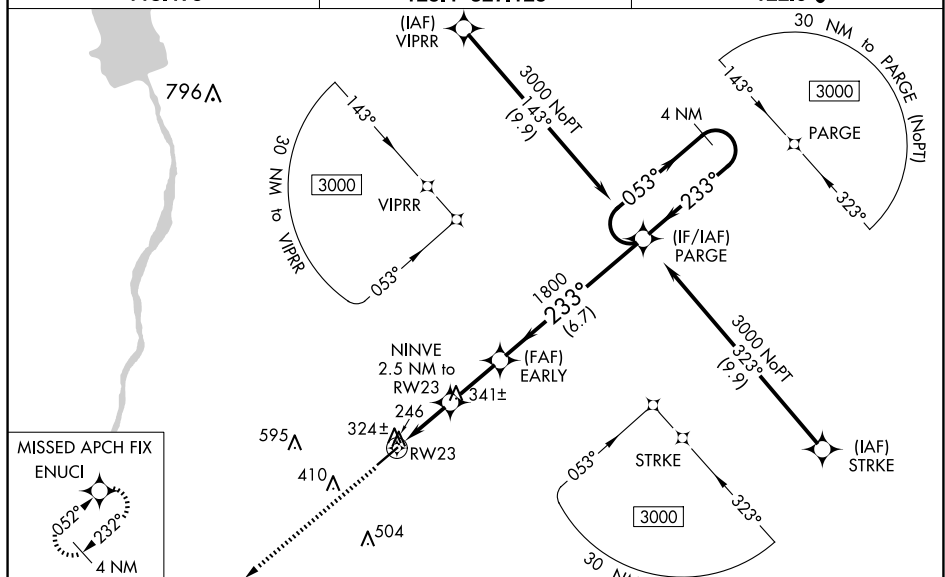
MALSF



**MISSED APPROACH:**  
Climb to 2000 direct  
ENUCI and hold.

AWOS-3PT  
118.475

CAIRNS APP CON ★  
125.4 327.125

CTAF  
122.9 **L**

|      |     |  |      |     |
|------|-----|--|------|-----|
| ELEV | 215 |  | TDZE | 210 |
|------|-----|--|------|-----|

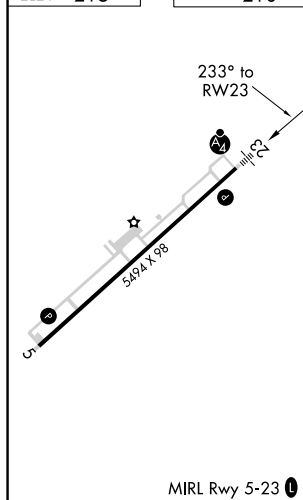


Diagram illustrating a VGS glidepath profile. The profile starts at 2000 feet (ENUCI) and descends to 1040 feet. Key waypoints and distances include:

- 2000** (ENUCI): Initial altitude.
- \*1.1 NM to RW23**: Distance from 2000 feet to the start of the glidepath.
- NINVE 2.5 NM to RW23**: Distance from NINVE to RW23.
- 1800**: Altitude at the intersection of the glidepath and the 1800-foot level.
- 1040\***: Altitude at the start of the glidepath.
- 233°**: Angle of the glidepath.
- GP 3.00° TCH 57**: Glidepath angle and threshold elevation.
- 4 NM Holding Pattern**: Holding pattern distance.
- 053°**: Angle of the holding pattern.
- 233°**: Angle of the holding pattern.
- 3000**: Final altitude.

| CATEGORY         | A     | B           | C   | D   |
|------------------|-------|-------------|---|---|
| LPV DA           | 501-1 |             | 291 (300-1)                                       |   |
| LNAV/<br>VNAV DA | 510-1 |             | 300 (300-1)                                       |   |
| LNAV MDA         | 600-1 |             | 390 (400-1)                                       |   |
| CIRCLING         | 720-1 | 505 (600-1) | 860-1 $\frac{3}{4}$<br>645 (700-1 $\frac{3}{4}$ ) | 960-2 $\frac{1}{2}$<br>745 (800-2 $\frac{1}{2}$ ) |