

21168

VOR/DME RWY 36
BOLIVAR MUNI (M17)

MISSED APPROACH: Climb to 3000 via SGF R-356 to SIVYA/SGF 24.7 DME and hold.

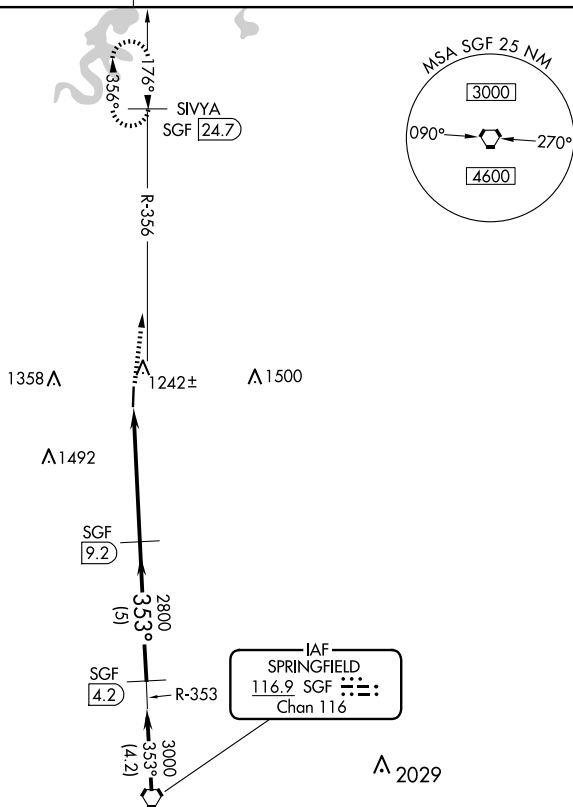
UNICOM
123.0 (CTAF) **L**

Diagram illustrating a 353° climb profile. The profile starts at a 3000 ft altitude, descends to a 2800 ft altitude, and then ascends to a 3000 ft altitude. The climb is divided into two 5 NM segments. The first segment is labeled 'SGF 14.2' and the second segment is labeled 'SGF 9.2'. The total climb is labeled 'SGF 4.2'. The climb is labeled '353°'. The diagram also shows a 'Procedure Turn NA' and a 'CIRCLING' procedure.

CATEGORY	A	B	C	D
S-36	1700-1	608 (700-1)		NA
C CIRCLING	1700-1	608 (700-1)		NA

BOLIVAR MUNI (M17)
VOR/DME RWY 36

NC-3, 10 JUL 2025 to 07 AUG 2025