

WAAS CH 69533 W18A	APP CRS 177°	Rwy Idg TDZE 1221 Apt Elev 1221	3400
--	------------------------	---	-------------

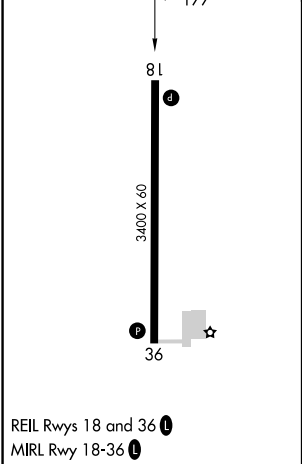
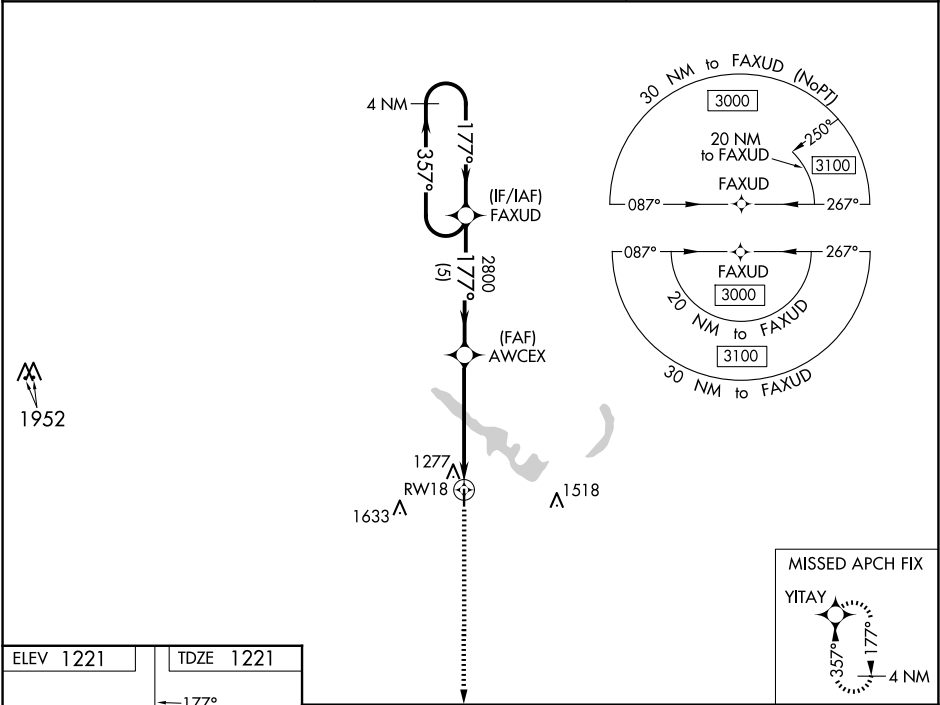
RNAV (GPS) RWY 18

GUTHRIE COUNTY RGNL (GCT)

Baro-VNAV NA. DME/DME RNP-0.3 NA. Use Audubon altimeter setting; when not received, use Carroll altimeter setting and increase LPV DA to 1535, LNAV/VNAV DA to 1748 and all MDA 20 feet; increase LNAV/VNAV all Cats visibility 1/8 mile.

MISSED APPROACH: Climb to 3000 direct YITAY and hold.

ADU AWOS-3 118.075	DES MOINES APP CON 123.9 360.7	UNICOM 122.8 (CTAF) 0
------------------------------	--	--



3000	YITAY	VGSi and RNAV glidepath not coincident (VGSi Angle 3.25/TCH 33).		4 NM Holding Pattern
AWCEX	2800	177°	2800	357° → 3000
RWY 18	4.8 NM	5 NM		GP 3.00° TCH 40
CATEGORY	A	B	C	D
LPV DA	1531-1	310 (400-1)	NA	
LNAV/VNAV DA	1744-1¾	523 (600-1¾)	NA	
LNAV MDA	1720-1	499 (500-1)	NA	
CIRCLING	1740-1 519 (600-1)	1880-1 659 (700-1)	NA	

NC-3, 10 JUL 2025 to 07 AUG 2025

NC-3, 10 JUL 2025 to 07 AUG 2025