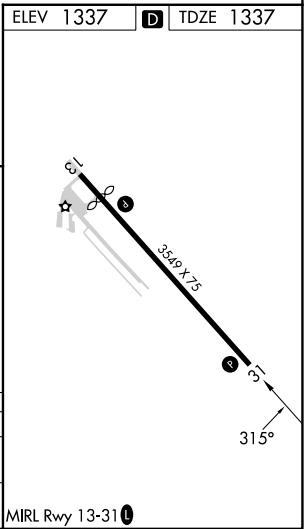
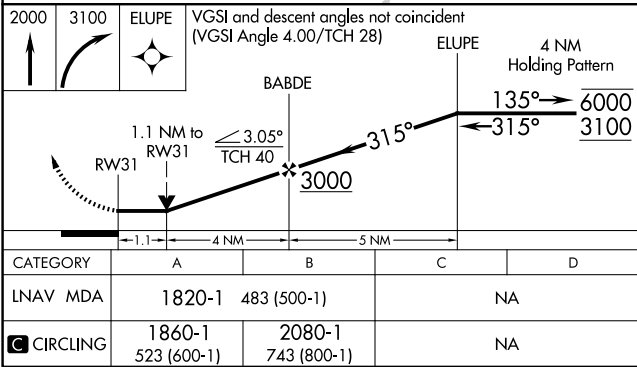
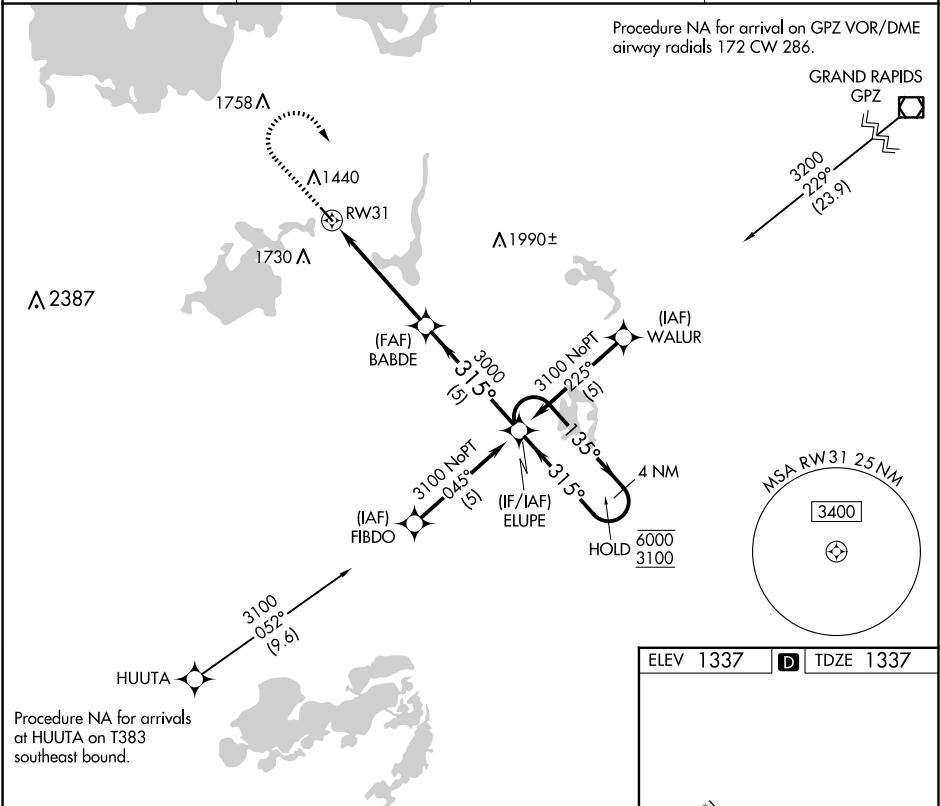


APP CRS	Rwy Idg	3549
315°	TDZE	1337
	Apt Elev	1337

RNAV (GPS) RWY 31
LONGVILLE MUNI (XVG)

RNP APCH - GPS.		MISSED APPROACH: Climb to 2000 then climbing right turn to 3100 direct ELUPE and hold.	
Circling Rwy 13 NA at night. Rwy 31 helicopter visibility reduction below ¾ SM NA.			
AWOS-3 118.275	MINNEAPOLIS CENTER 118.05 239.0	GCO 121.725	CTAF 122.9 0



NC-1, 10 JUL 2025 to 07 AUG 2025

NC-1, 10 JUL 2025 to 07 AUG 2025