

WAAS CH 40438 W06A	APP CRS 065°	Rwy Idg TDZE Apt Elev	3605 1665 1666
--	------------------------	-----------------------------	---

RNAV (GPS) RWY 6

LOGAN COUNTY (6L4)

RNP APCH - GPS.

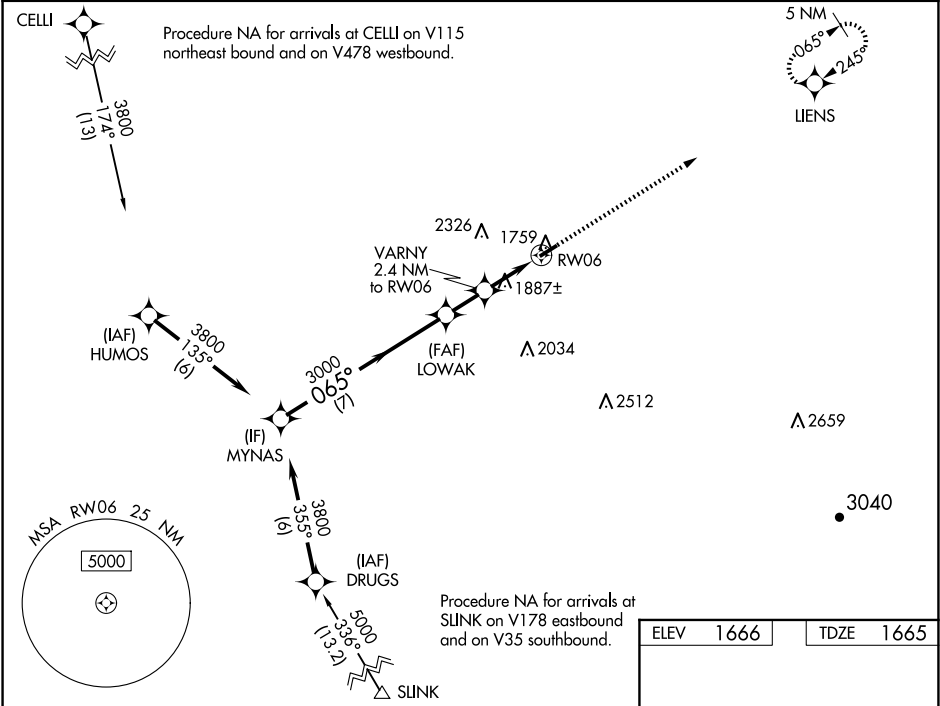
▼

⚠

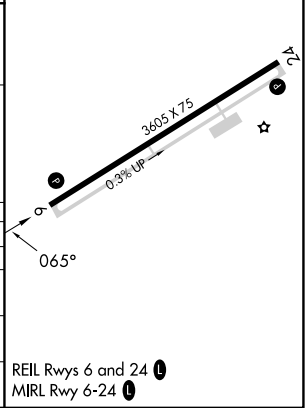
Rwy 6 helicopter visibility reduction below ¾ SM NA. Baro-VNAV NA. When local altimeter setting not received, use Pineville altimeter setting: increase LPV DA to 2079 feet and LNAV/VNAV DA to 2032 feet and LPV and LNAV/VNAV all Cats visibilities ¼ SM; increase all MDA 80 feet and LNAV Cat C visibility and Circling Cat B visibility ¼ SM. VDP NA when using Pineville altimeter setting.

MISSED APPROACH:
Climb to 4500 direct LIENS and hold.

AWOS-3PT 119,375	CHARLESTON APP CON 119.2 269.125	CTAF 0 122.9
----------------------------	--	-------------------------------



MYNAS	VGSI and RNAV glidepath not coincident (VGSI Angle 3.00/TCH 47).	4500	LIENS
3800	LOWAK	VARNY 2.4 NM to RW06	*LNAV only
GP 3.00° TCH 58	3000	1.6 NM to RW06	
	2460*		
	7 NM	1.6 NM	0.8 NM
			1.6 NM
CATEGORY	A	B	C
LPV DA	2010-1½	345 (400-1½)	NA
LNAV/VNAV DA	1963-1	298 (300-1)	NA
LNAV MDA	2200-1	535 (600-1)	2200-1½
			535 (600-1½)
CIRCLING	2360-1	2400-1	2720-3
	694 (700-1)	734 (800-1)	1054 (1100-3)



NE-4, 10 JUL 2025 to 07 AUG 2025

NE-4, 10 JUL 2025 to 07 AUG 2025