

WAAS CH <b>70431</b> <b>W24A</b>	APP CRS <b>245°</b>	Rwy Idg TDZE <b>1666</b> Apt Elev <b>1666</b>
--	------------------------	---

RNAV (GPS) RWY 24

LOGAN COUNTY (6L4)

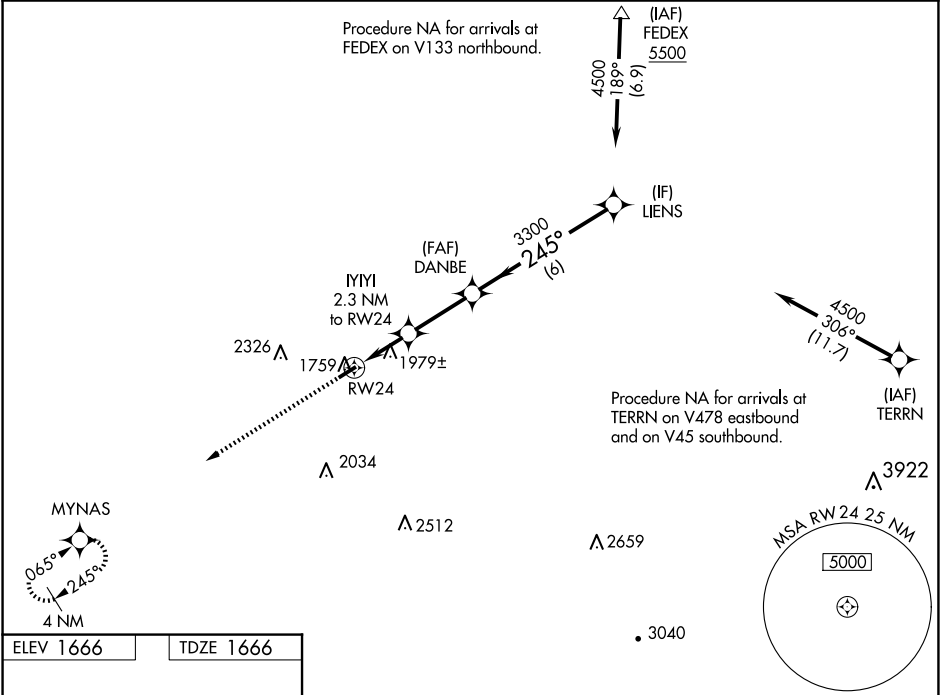
▼

▲

For uncompensated Baro-VNAV systems, LNAV/VNAV NA below -18°C (0°F) or above 54°C (130°F). Baro-VNAV and VDP NA when using Pineville altimeter setting. DME/DME RNP-0.3 NA. When local altimeter setting not received, use Pineville altimeter setting: increase LPV DA to 1985 feet and all visibilities ½ SM; increase LNAV/VNAV DA to 1988 feet and all visibilities ¼ SM; increase all MDA 80 feet and LNAV Cat C visibility and Circling Cat B visibility ¼ SM.

MISSED APPROACH:  
Climb to 3800 direct  
MYNAS and hold.

AWOS-3PT <b>119.375</b>	CHARLESTON APP CON <b>119.2 269.125</b>	CTAF <b>122.9</b>
----------------------------	--	-------------------



3800

MYNAS

245°

\* LNAV only.

RW24

IYIYI 2.3 NM to RW24

DANBE 3300

LIENS 4500

\* 1.7 NM to RW24

\* 2440

3300

GP 3.00° TCH 42

	1.7 NM	0.6	2.7 NM	6 NM	
CATEGORY	A	B	C	D	
LPV DA	1916-7/8	250 (300-7/8)		NA	
LNAV/VNAV DA	1919-7/8	253 (300-7/8)		NA	
LNAV MDA	2240-1	574 (600-1)	2240-1 5/8 574 (600-1 5/8)	NA	
CIRCLING	2360-1 694 (700-1)	2400-1 734 (800-1)	2720-3 1054 (1100-3)	NA	

REIL Rwy 6 and 24 **1**  
MIRL Rwy 6-24 **1**