

WAAS CH 82717 W25A	APP CRS 246°	Rwy Idg 5003 TDZE 1411 Apt Elev 1411
--	------------------------	---

RNAV (GPS) RWY 25

LEE COUNTY (OVG)

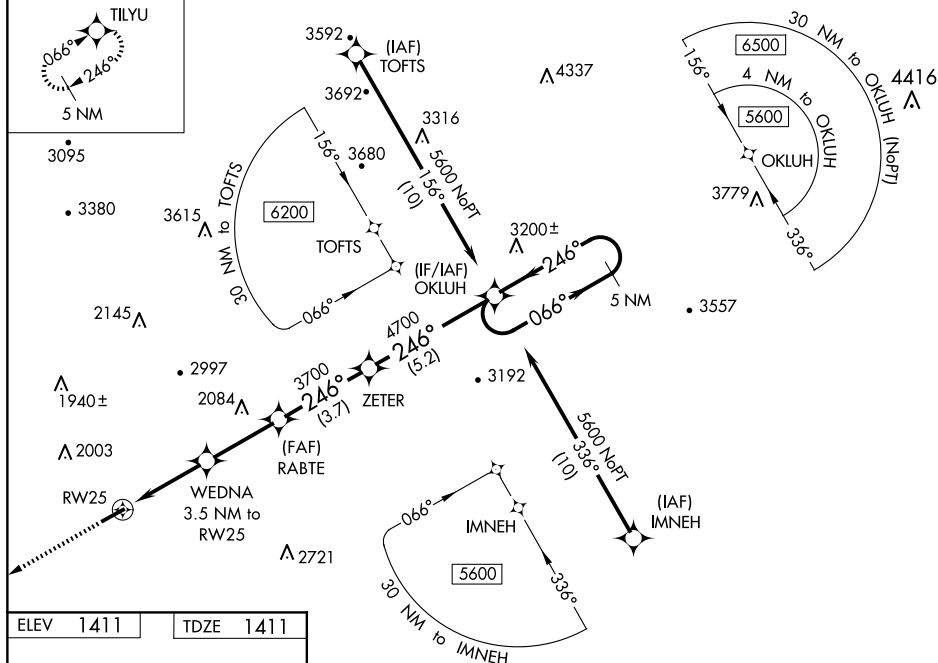


Helicopter visibility reduction below $\frac{3}{4}$ SM NA.
DME/DME RNP-0.3 NA.

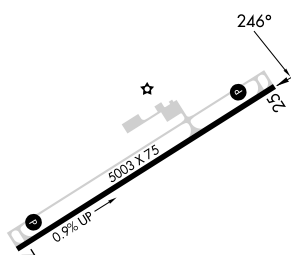
MISSED APPROACH: Climb to 5000 direct TILYU and hold, continue climb-in-hold to 5000.

AWOS-3 120.125	ATLANTA CENTER 127.55 269.50	CTAF 122.90
--------------------------	--	-----------------------

MISSED APCH FIX



ELEV	1411		TDZE	1411
------	------	--	------	------



MIRL Rwy 7-25 **L**
REIL Rwys 7 and 25 **L**

CATEGORY	A	B	C	D
LPV DA	1714-1	303 (400-1)		NA
RNAV/VNAV DA	2284-3	873 (900-3)		NA
RNAV MDA	2220-1 809 (900-1)	2220-1¼ 809 (900-1¼)	2220-2½ 809 (900-2½)	NA
C CIRCLING	2220-1 809 (900-1)		2600-3 1189 (1200-3)	NA

RNAV (GPS) RWY 25