

WAAS CH <b>63022</b> <b>W06A</b>	APP CRS <b>067°</b>	Rwy Idg TDZE <b>665</b> Apt Elev <b>665</b>
--	------------------------	---

RNAV (GPS) RWY 6

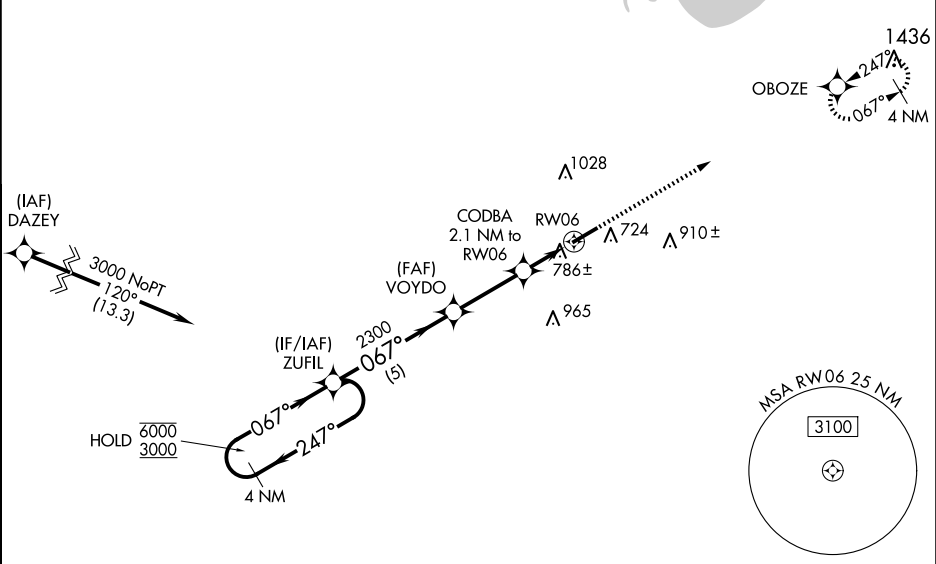
SANDUSKY COUNTY RGNL (S24)

RNP APCH - GPS.

**⚠** Baro-VNAV and VDP NA when using TOL altimeter setting. For uncompensated Baro-VNAV systems, LNAV/VNAV NA below -16°C or above 54°C. When local altimeter setting not received, use TOL altimeter setting: increase LPV DA to 1008 feet and all visibilities ¾ SM; increase LNAV/VNAV DA to 1041 feet and all visibilities ¾ SM; increase all MDA 100 feet and LNAV visibility Cat C and D ¾ SM and Circling visibility Cat C and D ½ SM.

MISSED APPROACH:  
Climb to 3000 direct  
OBOZE and hold.

AWOS-3P <b>119.575</b>	TOLEDO APP CON <b>126.1 307.0</b>	UNICOM <b>123.05 (CTAF) 0</b>
---------------------------	--------------------------------------	----------------------------------



					ELEV 665		TDZE 665	
4 NM Holding Pattern					3000 ↑		OBOZE ✧	