

WAAS CH <b>42822</b> <b>W24A</b>	APP CRS <b>247°</b>	Rwy Idg TDZE <b>665</b> Apt Elev <b>665</b>
--	------------------------	---

RNAV (GPS) RWY 24

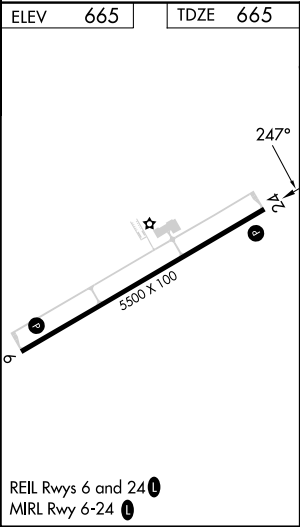
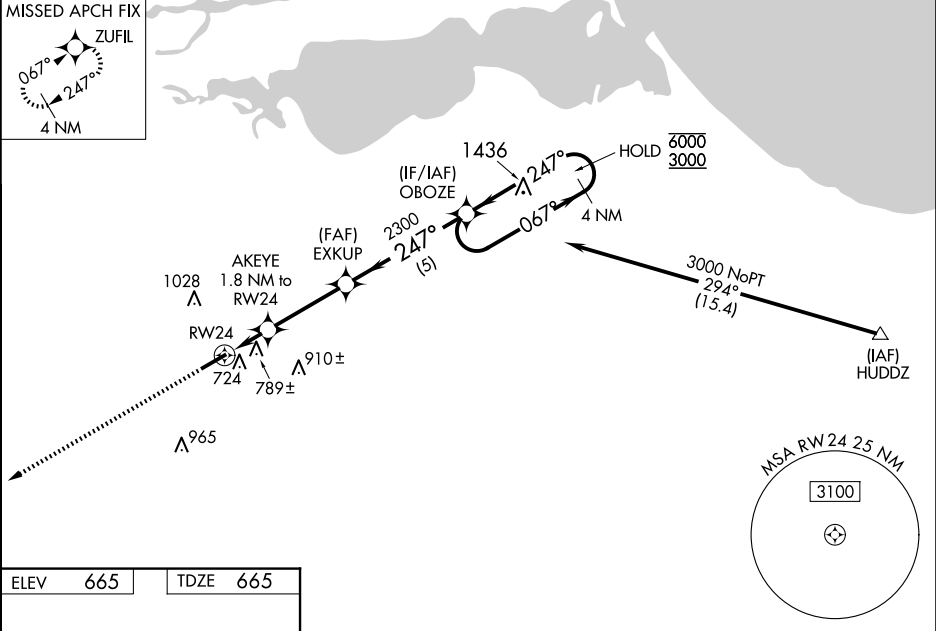
SANDUSKY COUNTY RGNL (S24)

RNP APCH - GPS.

Baro-VNAV and VDP NA when using TOL altimeter setting. For uncompensated Baro-VNAV systems, procedure NA below -16°C or above 54°C. When local altimeter setting not received, use TOL altimeter setting: increase LPV DA to 978 feet and all visibilities ¾ SM; increase LNAV/VNAV DA to 1196 feet and all visibilities ¾ SM; increase all MDA 100 feet and LNAV visibility Cat C and D ¼ SM and Circling visibility Cat C and D ½ SM.

MISSED APPROACH:  
Climb to 3000 direct  
ZUFIL and hold.

AWOS-3P <b>119.575</b>	TOLEDO APP CON <b>126.1 307.0</b>	UNICOM <b>123.05 (CTAF) 0</b>
---------------------------	--------------------------------------	----------------------------------



3000

↑

ZUFIL

4 NM

Holding Pattern

OBOZE

067° → 6000

← 247° 3000

AKEYE

1.8 NM to RW24

EXKUP

2300

1.1 NM to RW24

1.1 NM

0.7 NM

3.2 NM

5 NM

1260

2300

GP 3.00°

TCH 42

CATEGORY	A	B	C	D
LPV DA	885-3⁄4 220 (300-3⁄4)			
LNAV/VNAV DA	1103-1½ 438 (500-1½)			
LNAV MDA	1040-1	375 (400-1)	1040-1⅛	375 (400-1⅛)
CIRCLING	1120-1 455 (500-1)	1160-1 495 (500-1)	1380-2 715 (800-2)	1380-2¼ 715 (800-2¼)