

APP CRS  
**306°**

Rwy ldg  
TDZE  
Apt Elev  
**N/A**  
**N/A**  
**1747**

**RNAV (GPS)-A**  
LAKE PLACID (LKP)

RNP APCH.

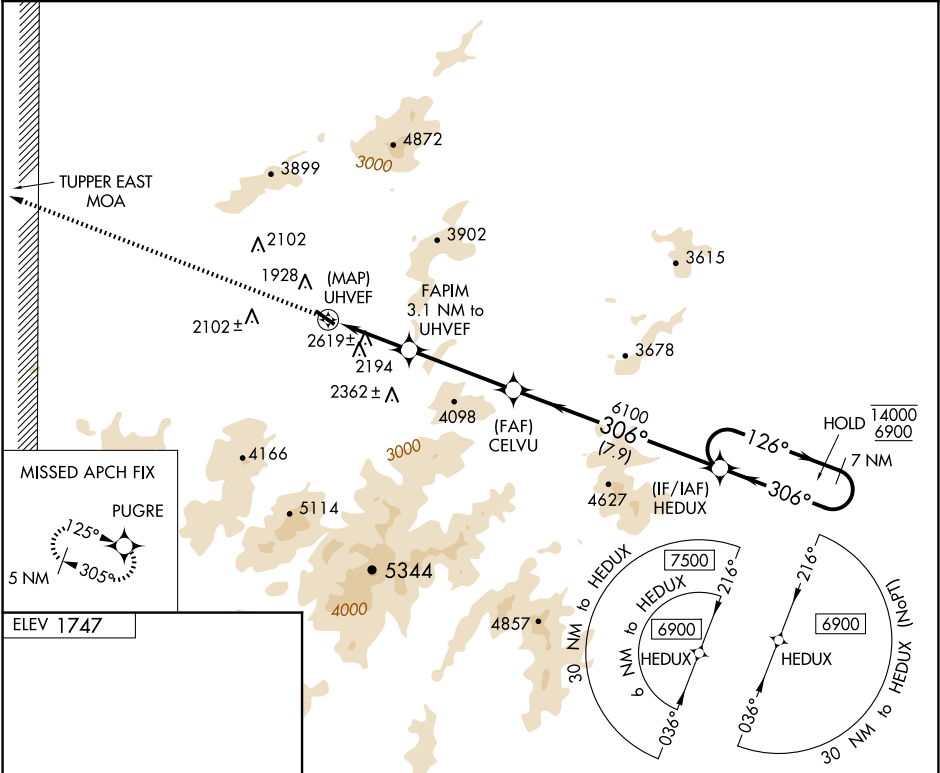
NA

-32°C

Procedure NA at night.  
Use Saranac Lake altimeter setting.

MISSED APPROACH: Climb to 5000 direct PUGRE and hold.

AWOS-3PT <b>118.025</b>	SLK ASOS <b>124.175</b>	BOSTON CENTER <b>120.35 342.25</b>	UNICOM <b>122.8 (CTAF) 0</b>
----------------------------	----------------------------	---------------------------------------	---------------------------------



ELEV 1747

MIRL Rwy 14-32 0

5000 PUGRE

UHVEF

FAPIM 3.1 NM to UHVEF

CELVU

HEDUX

7 NM Holding Pattern

306°

126°

306°

14000 6900

3.1 NM

4 NM

7.9 NM

CATEGORY	A	B	C	D
CIRCLING	3160-1¼ 1413 (1500-1¼)	3160-1½ 1413 (1500-1½)	NA	