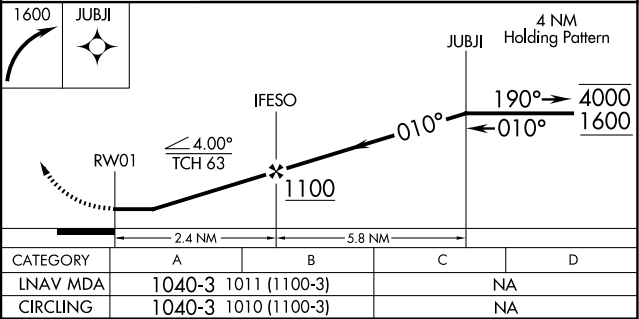
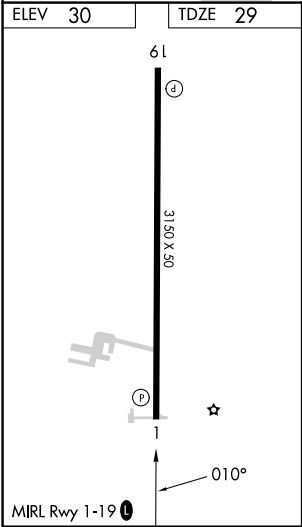
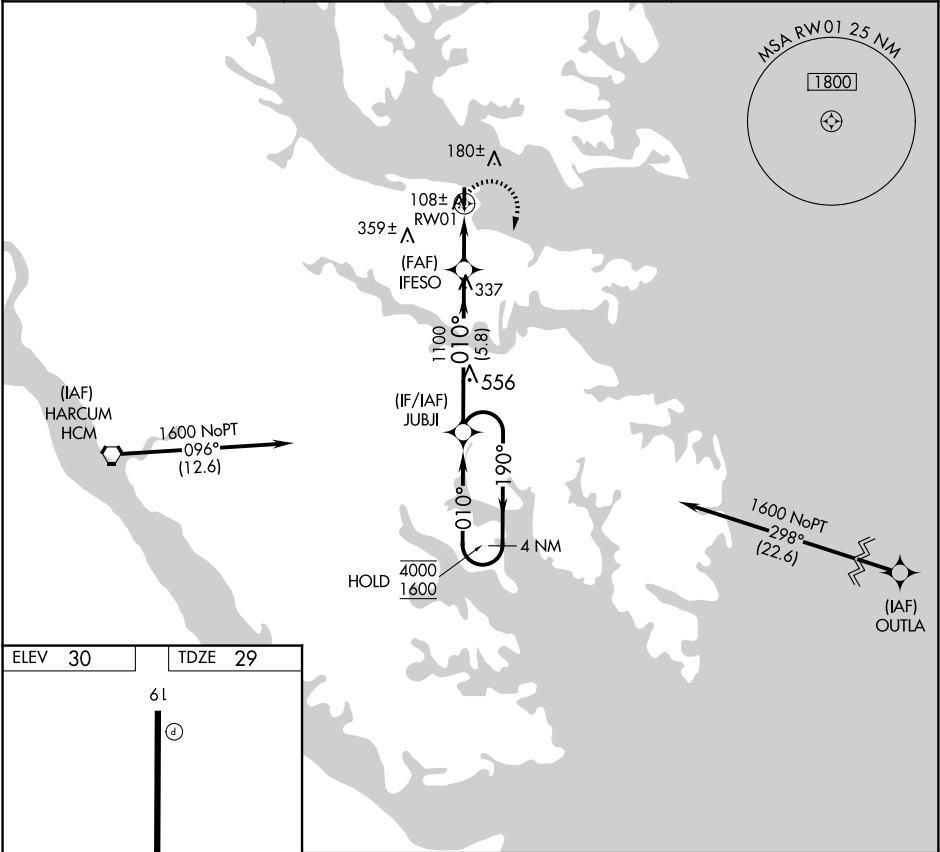


APP CRS	Rwy Ldg	3150
010°	TDZE	29
	Apt Elev	30

RNAV (GPS) RWY 1  
HUMMEL FLD (W75)

RNP APCH - GPS.	MISSED APPROACH: Climbing right turn to 1600 direct JUBJI and hold.
▼ Procedure NA at night. ▲ Rwy 1 helicopter visibility reduction below 1 SM NA.	

AWOS-3 118.45	NORFOLK APP CON 126.05 370.925	UNICOM 123.0 (CTAF) 0
------------------	-----------------------------------	--------------------------



NE-3, 10 JUL 2025 to 07 AUG 2025

NE-3, 10 JUL 2025 to 07 AUG 2025