

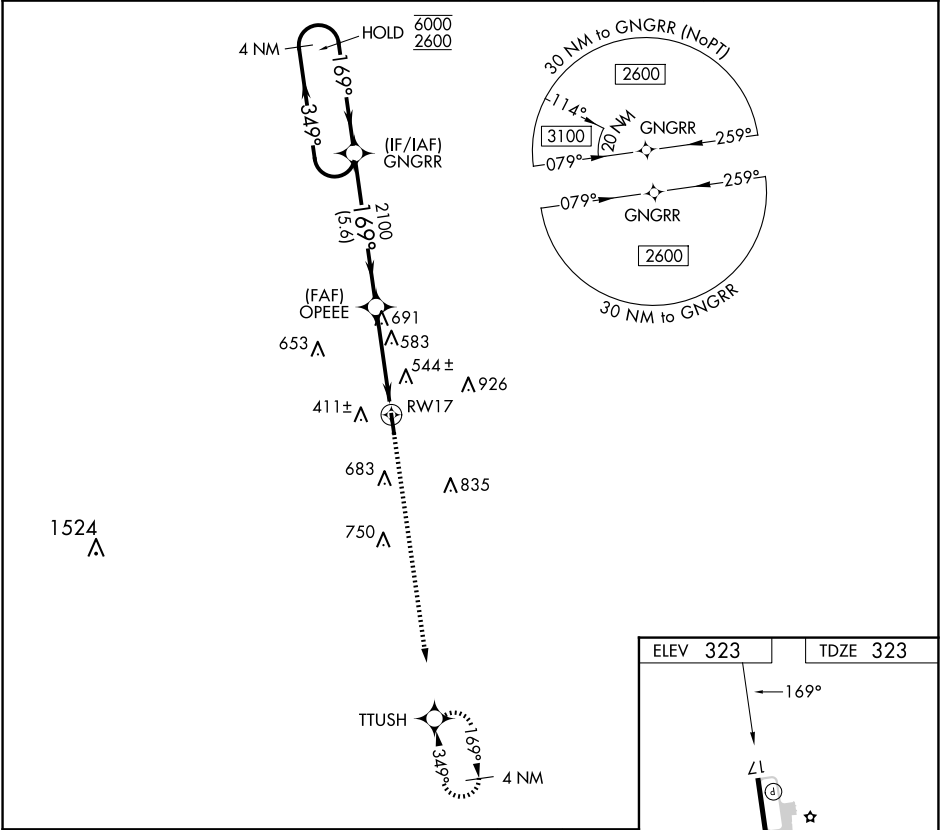
APP CRS	Rwy Idg	4000
169°	TDZE	323
	Apt Elev	323

RNAV (GPS) RWY 17

SMITHVILLE CRAWFORD MUNI (84R)

RNP APCH - GPS.	MISSED APPROACH: Climb to 2600 direct TTUSH and hold.
<div><div>▼</div><div>NA</div></div> <div>Rwy 17 helicopter visibility reduction below 1 SM NA. Straight-in Rwy 17 NA at night, Circling Rwy 17 NA at night.</div>	

GYB AWOS-3 119.225	AUSTIN APP CON 120.875 270.25	CTAF 122.9	123.30
-----------------------	----------------------------------	---------------	--------



4 NM Holding Pattern

GNGRR

2600

TTUSH

6000

2600

349°

169°

169°

2100

4.20°

TCH 40

RWY 17

5.6 NM

3.9 NM

CATEGORY	A	B	C	D
RNAV MDA	900-1	577 (600-1)	NA	
CIRCLING	960-1	637 (700-1)	NA	

ELEV 323

TDZE 323

169°

L1

4000 x 75

35

MIRL Rwy 17-35