

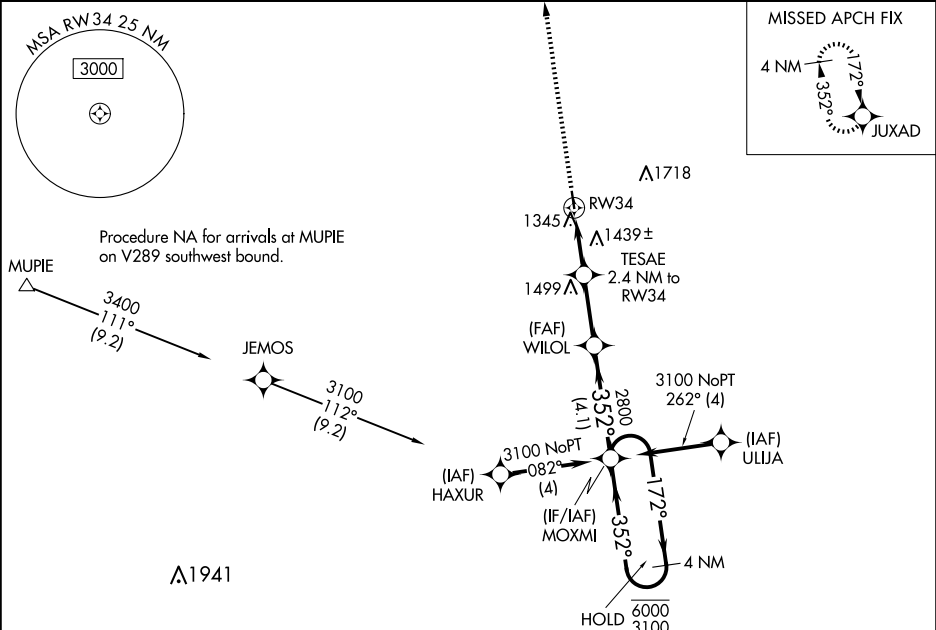
WAAS CH <b>72728</b> <b>W34A</b>	APP CRS <b>352°</b>	Rwy Idg <b>3500</b> TDZE <b>1191</b> Apt Elev <b>1195</b>
--	------------------------	---

RNAV (GPS) RWY 34

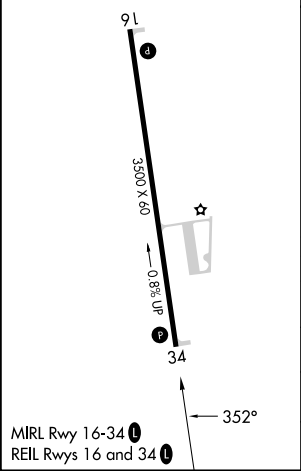
HOUSTON MEML (M48)

RNP APCH-GPS.	MISSED APPROACH: Climb to 3400 direct JUXAD and hold.
<div><div>▼</div><div>NA</div></div> Baro-VNAV NA. Use Fort Leonard Wood altimeter setting, when not received use West Plains altimeter setting.	

TBN ASOS <b>118.7 229.4</b>	KANSAS CITY CENTER <b>128.35 284.675</b>	CTAF <b>122.9 0</b>
--------------------------------	---	------------------------



ELEV 1195	TDZE 1191
-----------	-----------



3400	JUXAD	VGSI and RNAV glidepath not coincident (VGSI Angle 4.00/TCH 41).	MOXMI	4 NM Holding Pattern
↑	✧		WILOL	172° → 6000 ← 352° 3100
			TESAE 2.4 NM to RW34	GP 3.00° TCH 40
			2800	
			1980	
			2.4 NM	2.6 NM
			4.1 NM	
CATEGORY	A	B	C	D
LPV DA	1509-1	318 (400-1)	NA	NA
LNAV/VNAV DA	1740-1 5/8	549 (600-1 5/8)	NA	NA
LNAV MDA	1740-1	549 (600-1)	NA	NA
CIRCLING	1760-1 565 (600-1)	1880-1 685 (700-1)	NA	NA