

WAAS CH 99437 W13A	APP CRS 124°	Rwy Idg 3300 TDZE 993 Apt Elev 993
--	------------------------	---

RNAV (GPS) RWY 13

GLENCOE MUNI (GYL)

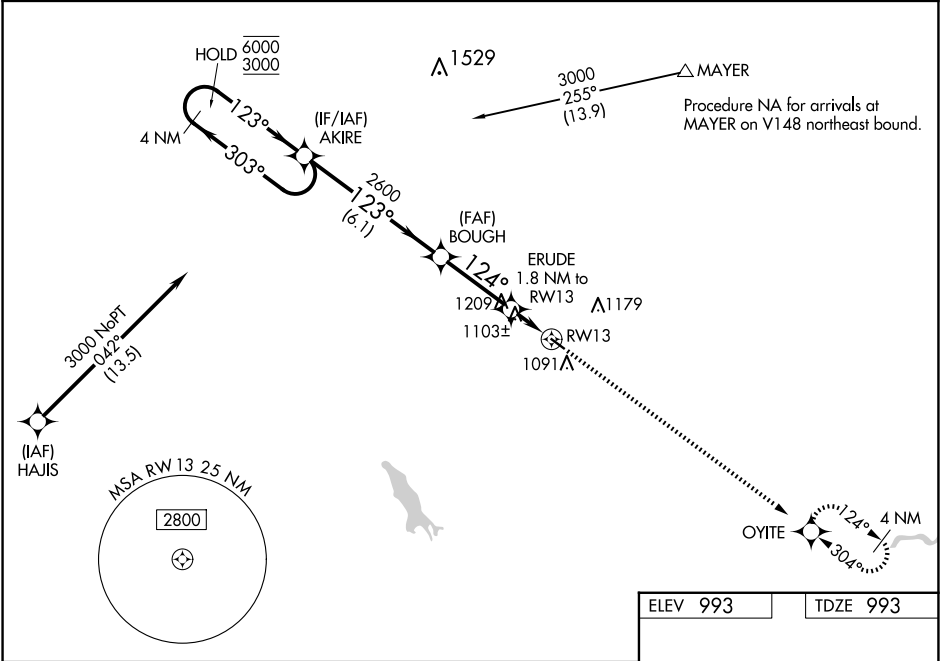
RNP APCH - GPS.

▼

For uncompensated Baro-VNAV systems, LNAV/VNAV NA below -16°C or above 54°C. Baro-VNAV and VDP NA when using Hutchinson altimeter setting. Rwy 13 helicopter visibility reduction below ¾ SM NA. When local altimeter setting not received, use Hutchinson altimeter setting; increase LPV DA to 1317; increase LNAV/VNAV DA to 1403; and increase all MDA 60 feet.

MISSED APPROACH: Climb to 3000 direct OYITE and hold.

AWOS-3 119.625	MINNEAPOLIS APP CON 134.7 284.7	UNICOM 122.8 (CTAF) 0
--------------------------	---	---------------------------------



4 NM Holding Pattern		AKIRE		VGS1 and RNAV glidepath not coincident (VGS1 Angle 3.00/TCH 28).		3000	OYITE
6000 ← 303°				BOUGH		↑	✦
3000 → 123°				2600			
GP 3.00°				ERUDE		1.8 NM to RW13	
TCH 40				1600		1.1 NM to RW13	
		6.1 NM		3.1 NM		0.7 NM	
						1.1 NM	
CATEGORY	A	B	C	D			
LPV DA	1274-1	281 (300-1)	NA				
LNAV/VNAV DA	1360-1	367 (400-1)	NA				
LNAV MDA	1360-1	367 (400-1)	NA				
CIRCLING	1420-1 427 (500-1)	1480-1 487 (500-1)	NA				

