

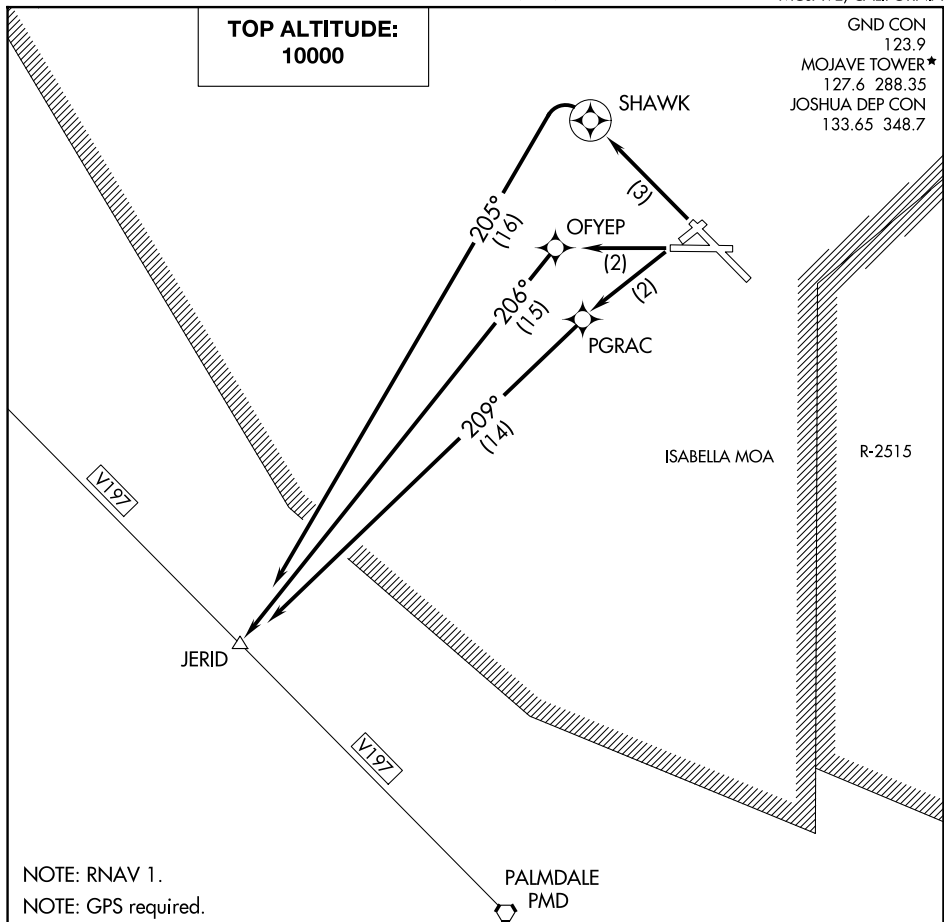
JERID FIVE DEPARTURE (RNAV)

MOJAVE AIR & SPACE PORT/RUTAN FLD (MHV)
AL-9353 (FAA) MOJAVE, CALIFORNIA

MOJAVE, CALIFORNIA

TOP ALTITUDE:
10000

GND CON		
123.9		
MOJAVE TOWER★		
127.6	288.35	
JOSHUA DEP CON		
133.65	348.7	



NOTE: RNAV 1.
NOTE: GPS required.

TAKEOFF MINIMUMS

Rwys 4, 8, 12: NA - restricted airspace.

Rwys 22 and 26: Standard with minimum climb of 480' per NM to 7600.

Rwy 30: Standard with minimum climb of 497' per NM to 7000.

NOTE: Chart not to scale.

DEPARTURE ROUTE DESCRIPTION

TAKEOFF RUNWAY 22: Climb direct PGRAC, then on track 209° to JERID, thence. . .

TAKEOFF RUNWAY 26: Climb direct OFYEP, then on track 206° to JERID, thence. . . .

TAKEOFF RUNWAY 30: Climb direct SHAWK, then climbing left turn on track 205° to JERID, thence. . .

...maintain 10000, expect filed altitude 10 minutes after departure.

JERID FIVE DEPARTURE (RNAV)

(JERID5.JERID) 15SEP16

MOJAVE, CALIFORNIA

MOJAVE AIR & SPACE PORT/RUTAN FLD (MHV)

SW-3, 10 JUL 2025 to 07 AUG 2025