

APP CRS  
009°

Rwy Idg  
TDZE  
Apt Elev

N/A  
N/A  
4492

RNAV (GPS)-B

MCCARLEY FLD (UØ2)

RNP APCH.

▼

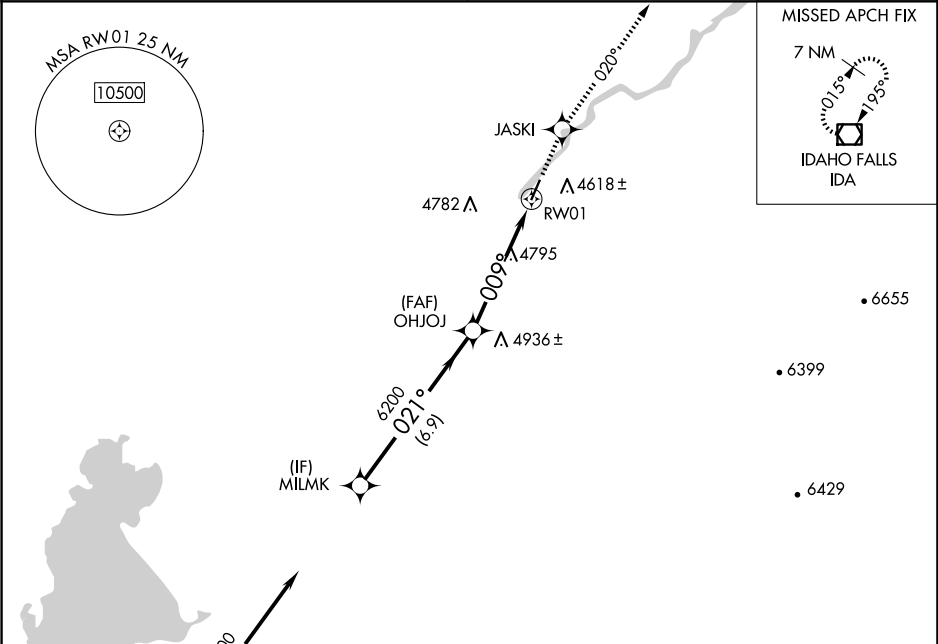
▲ NA

Use Pocatello altimeter setting, when not received use Idaho Falls altimeter setting. Helicopter visibility reduction below 1 SM NA.

MISSED APPROACH: Climb to 7000 direct JASKI and on 020° track to IDA VOR/DME and hold.

SALT LAKE CITY CENTER  
128.35 239.25

UNICOM  
122.8 (CTAF)



HOLD 8500

7000 021° (1/2)

POCATELLO PIH (IAF)

Holding not required for arrivals at PIH VOR/DME via V21-257 northbound.

VGSI and descent angle not coincident (VGSI Angle 3.00/TCH 39).

7000 JASKI 020° tr IDA

MILMK OHJOJ RW01

Procedure Turn NA

6200 009°

3.05° TCH 40

6.9 NM 5.2 NM

CATEGORY	A	B	C	D
CIRCLING	5380-1¼	888 (900-1¼)	5380-2¾ 888 (900-2¾)	5900-3 1408 (1500-3)

MRL Rwy 1-19

NW-1, 10 JUL 2025 to 07 AUG 2025

NW-1, 10 JUL 2025 to 07 AUG 2025