

APP CRS  
189°

Rwy Idg  
TDZE  
Apt Elev  
N/A  
N/A  
4492

RNAV (GPS)-A

MCCARLEY FLD (U02)

RNP APCH.

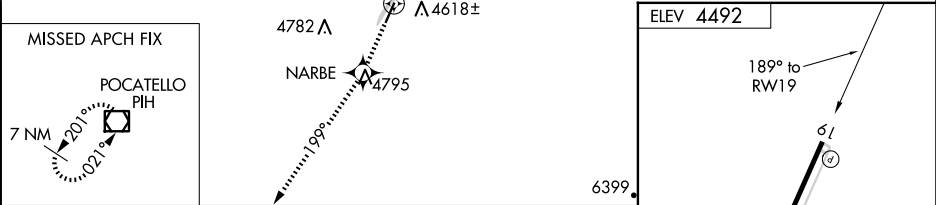
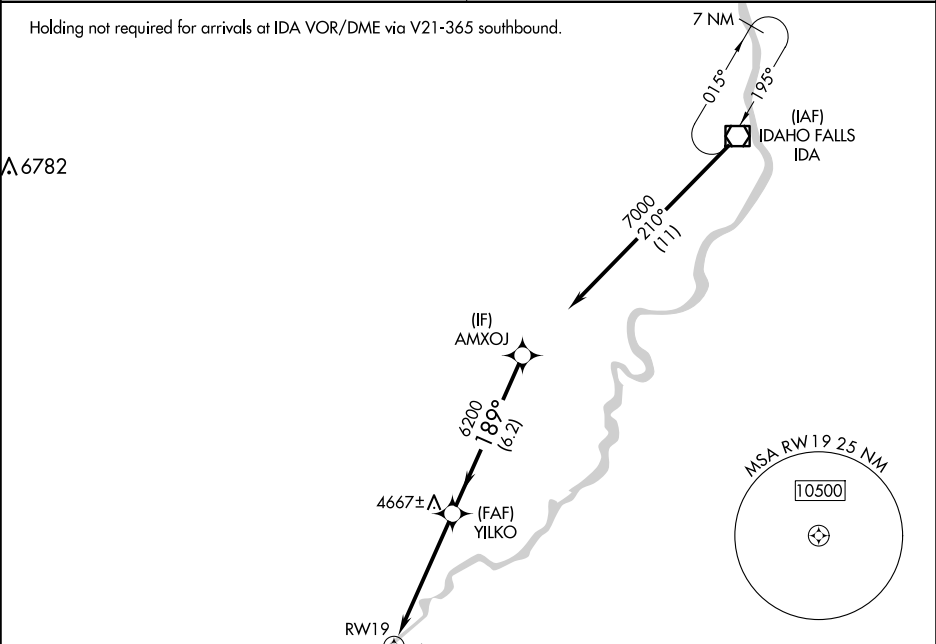
▼

Use Pocatello altimeter setting, when not received use Idaho Falls altimeter setting. Helicopter visibility reduction below 1 SM NA.

MISSED APPROACH: Climb to 8500 direct NARBE and on 199° track to PIH VOR/DME and hold.

SALT LAKE CITY CENTER  
128.35 239.25

UNICOM  
122.8 (CTAF)



8500

NARBE

199° tr

PIH

Visual Segment - Obstacles.

AMXJO

YILKO

6200

189°

7000

Procedure Turn NA

RW19

5.2 NM

6.2 NM

CATEGORY	A	B	C	D
CIRCLING	5340-1¼ 848 (900-1¼)	5380-2¾ 888 (900-2¾)	5900-3 1408 (1500-3)	

MIRL Rwy 1-19

NW-1, 10 JUL 2025 to 07 AUG 2025

NW-1, 10 JUL 2025 to 07 AUG 2025