

WAAS CH <b>70630</b> <b>W30A</b>	APP CRS <b>293°</b>	Rwy Idg TDZE Apt Elev	<b>4300</b> <b>918</b> <b>918</b>
--	------------------------	-----------------------------	---

RNAV (GPS) RWY 30

MOORHEAD MUNI/FLORENCE KLINGENSMITH FLD (JKJ)

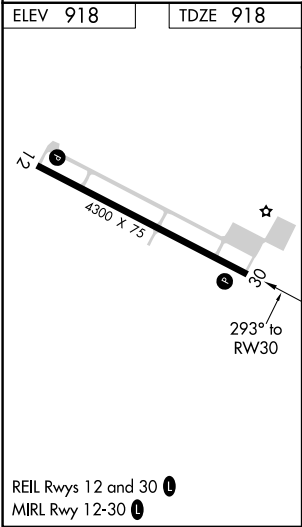
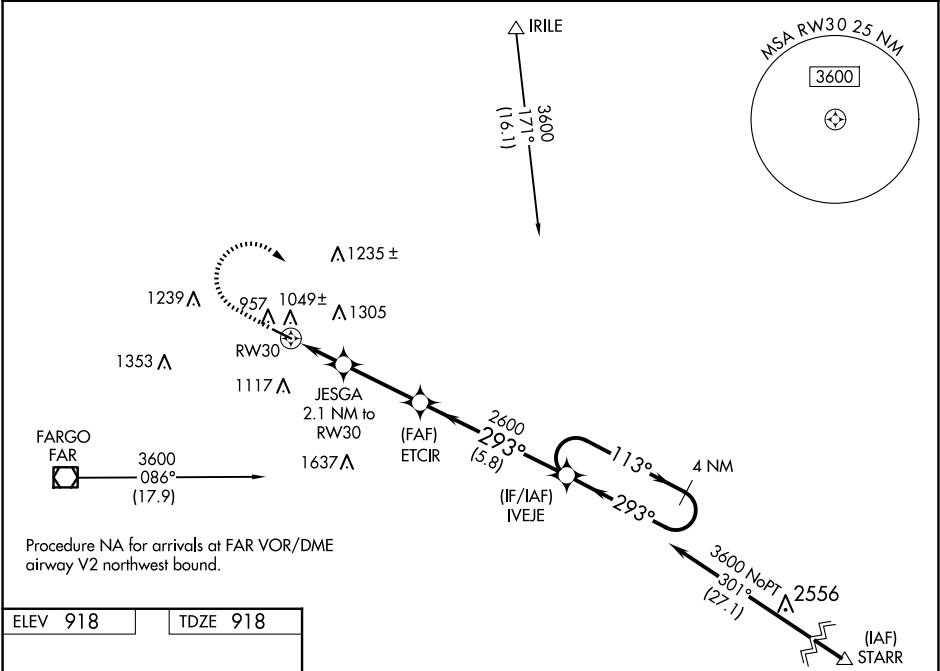
⚠

For uncompensated Baro-VNAV systems, LNAV/VNAV NA below -16°C (4°F) or above 54°C (130°F). DME/DME RNP-0.3 NA. When local altimeter setting not received, use Hector Intl altimeter setting and increase all DA 21 feet, increase all MDA 40 feet.

MISSED APPROACH:

Climb to 1700 then climbing right turn to 3600 direct IVEJE and hold.

AWOS-3 <b>120.0</b>	FARGO APP CON <b>120.4 377.15</b>	GCO <b>121.725</b>	UNICOM <b>123.0</b> (CTAF) <b>📻</b>
------------------------	--------------------------------------	-----------------------	--



1700		3600	IVEJE	VGSI and RNAV glidepath not coincident (VGSI Angle 3.00/TCH 25).	
*LNAV only		JESGA 2.1 NM to RW30	ETCIR	IVEJE	4 NM Holding Pattern
RW30		1.1 NM to RW30	2600	293°	3600
1.1 NM		1 NM	3.1 NM	5.8 NM	GP 3.00° TCH 40
CATEGORY	A	B	C	D	
LPV DA	1168-1	250 (300-1)	NA	NA	
LNAV/VNAV DA	1211-1	293 (300-1)	NA	NA	
LNAV MDA	1300-1	382 (400-1)	NA	NA	
CIRCLING	1360-1 442 (500-1)	1380-1 462 (500-1)	NA	NA	