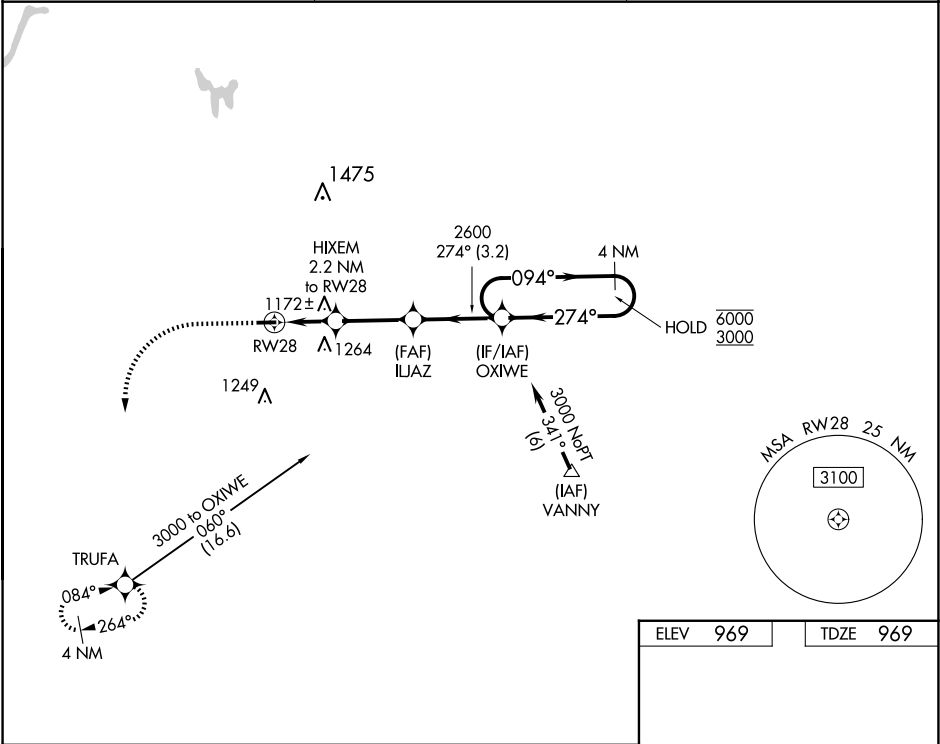


APP CRS	Rwy Idg	3499
274°	TDZE	969
	Apt Elev	969

RNAV (GPS) RWY 28

LAKEVIEW/GRIFFITH FLD (13C)

RNP APCH - GPS.		MISSED APPROACH: Climb to 1800 then climbing left turn to 3000 direct TRUFA and hold.
<div><div></div><div>NA</div></div> <div>Procedure NA at night. Use Big Rapids altimeter setting; when not received, use Mount Pleasant altimeter setting and increase all MDAs 60 feet. Rwy 28 helicopter visibility reduction below 1 SM NA.</div>	RQB AWOS-3P 125.875	GREAT LAKES APP CON * 124.6 257.6
		UNICOM 122.8 (CTAF) 0



<div><div>1800</div><div>3000</div><div>TRUFA</div></div>				
<div><div>RW28</div><div>HIXEM 2.2 NM to RW28</div><div>ILJAZ</div><div>OXIWE</div><div>4 NM Holding Pattern</div></div>				
<div><div>2.2 NM</div><div>2.8 NM</div><div>3.2 NM</div></div>				
CATEGORY	A	B	C	D
LNVA MDA	1480-1	511 (600-1)	NA	
CIRCLING	1480-1 511 (600-1)	1580-1 611 (700-1)	NA	

