

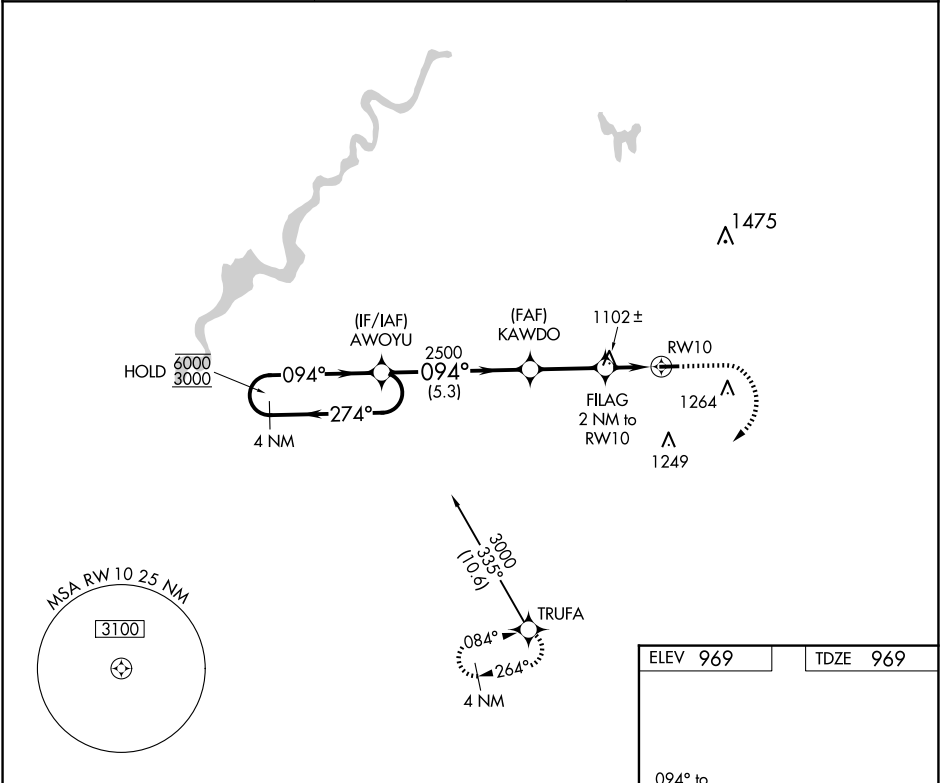
APP CRS	Rwy Idg	3499
094°	TDZE	969
	Apt Elev	969

# RNAV (GPS) RWY 10

LAKEVIEW/GRIFFITH FLD (13C)

RNP APCH.	Procedure NA at night. Rwy 10 helicopter visibility reduction below 1 SM NA. Use Big Rapids altimeter setting.	MISSED APPROACH: Climb to 1800 then climbing right turn to 3000 direct TRUFA and hold.
NA		

RQB AWOS-3P 125.875	GREAT LAKES APP CON * 124.6 257.6	UNICOM 122.8 (CTAF) 0
------------------------	--------------------------------------	--------------------------



4 NM Holding Pattern		Visual Segment - Obstacles.		1800	3000	TRUFA
AWOYU		KAWDO		FILAG 2 NM to RW10		
6000 ← 274° 3000 → 094°		2500		RW10		
5.3 NM		2.7 NM		2 NM		
CATEGORY	A	B	C	D		
LNAV MDA	1400-1	431 (500-1)	NA			
CIRCLING	1480-1 511 (600-1)	1580-1 611 (700-1)	NA			
				MIRL Rwy 10-28 REIL Rws 10 and 28		

EC-1, 10 JUL 2025 to 07 AUG 2025

EC-1, 10 JUL 2025 to 07 AUG 2025