

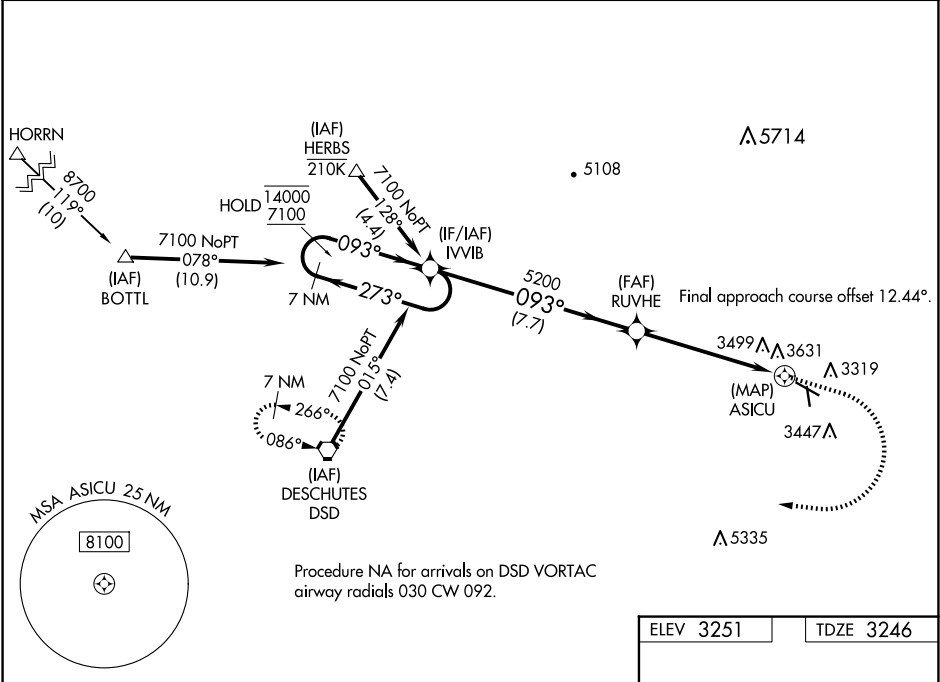
WAAS CH 60936 W11A	APP CRS 093°	Rwy Idg TDZE Apt Elev	5405 3246 3251
----------------------------------------	------------------------	-----------------------------	-------------------------------------------

RNAV (GPS) RWY 11

PRINEVILLE (S39)

RNP APCH-GPS.	MISSED APPROACH: Climb to 5100 then climbing right turn to 7100 direct DSD VORTAC and hold. *Missed approach requires minimum climb of 215 feet per NM to 5400.
<div><div>▼</div><div>⚠</div></div> <div><div>Circling NA for Cat D south of Rwy 11-29.</div><div>Rwy 11 helicopter visibility reduction below ¾ SM NA.</div><div>Circling Rwy 15 NA at night.</div></div>	

AWOS-3PT 118.325	SEATTLE CENTER 126.15 269.475	UNICOM 122.7 (CTAF) 0
----------------------------	-----------------------------------------	---------------------------------



	7 NM Holding Pattern		IVVIB	RUVHE	5100	7100	DSD
	14000 ← 273°		7100 → 093°	093°	0.7 NM to ASICU		
				5200	3.00°	TCH 40	
					7.7 NM	4.8 NM	0.7 0.5
CATEGORY	A	B	C	D			
LP MDA*	3660-1	414 (500-1)	3660-1 ⅛	414 (500-1 ⅛)			
LP MDA	3760-1	514 (600-1)	3760-1 ⅜	514 (600-1 ⅜)			
LNAV MDA	3900-1	654 (700-1)	3900-1 ⅞	654 (700-1 ⅞)			
<div>CIRCLING</div>	3960-1 709 (800-1)	4040-1 789 (800-1)	4040-2 ¼ 789 (800-2 ¼)	4040-2 ½ 789 (800-2 ½)			

