

ST. ELMO, ALABAMA

AL-9339 (FAA)

21252

WAAS CH 69507 W06A	APP CRS 059°	Rwy Idg 3998 TDZE 132 Apt Elev 132
--	------------------------	---

RNAV (GPS) RWY 6
ST ELMO (2R5)

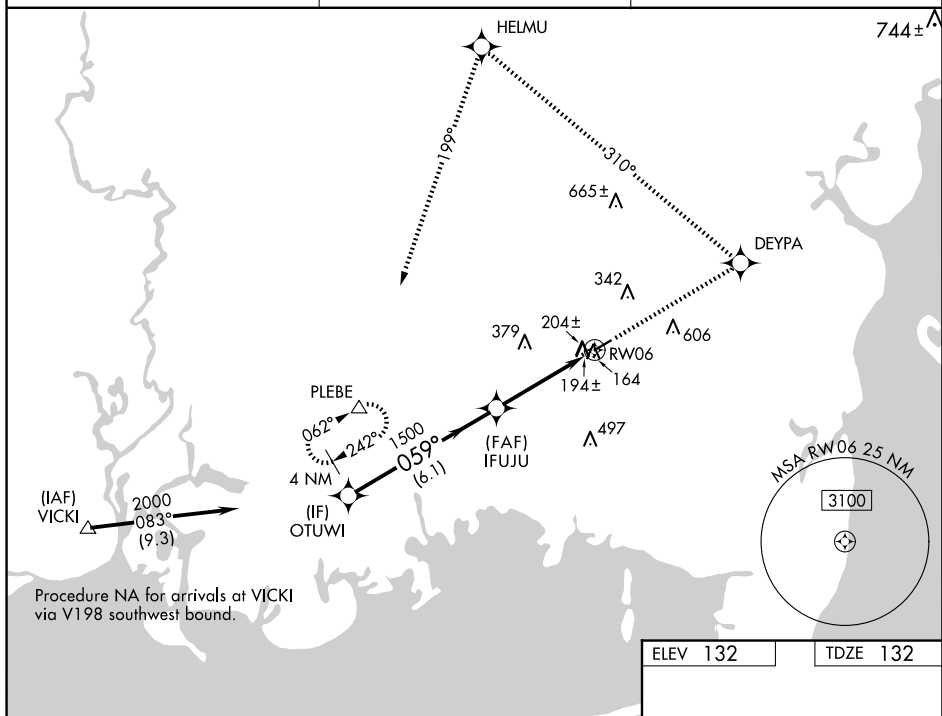
T DME/DME RNP-0.3 NA. Visibility reduction by
A NA helicopters NA. Use Mobile Rgnl altimeter setting;
 when not received use Pascagoula altimeter setting
 and increase DA to 483 feet and all MDA 20 feet.

MISSED APPROACH: Climb to 2000 direct DEYPA and left turn via 310° track to HELMU and left turn via 199° track to PLEBE and hold.

MOBILE APP CON★
121.0 307.1

HOUSTON CENTER
127.65 285,475

CTAF
122.9 **L**



Procedure
Turn
NA

OTUW|

2000

DEYP.

PLEBE

2000

GP 3.00°
TCH 51

150

-4.1 NM

CATEGORY

A

B

D

IPV D

475-1¼ 343 (400-1¼)

A

LNAV MDA

540-1 408 (500-1)

540-1¼
408 (500-1¼)

A

CIRCLING

720-1 588 (600-1)

960-2½
828 (900-2½)

JA

MIRL Rwy 6-24 **L**

ST. ELMO, ALABAMA

Orig-A 09SEP21

30°30'N-88°17'W

ST ELMO (2R5)
RNAV (GPS) RWY 6

SE-4, 10 JUL 2025 to 07 AUG 2025