

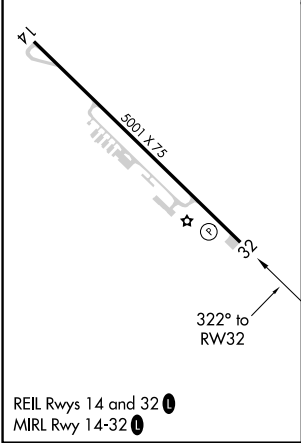
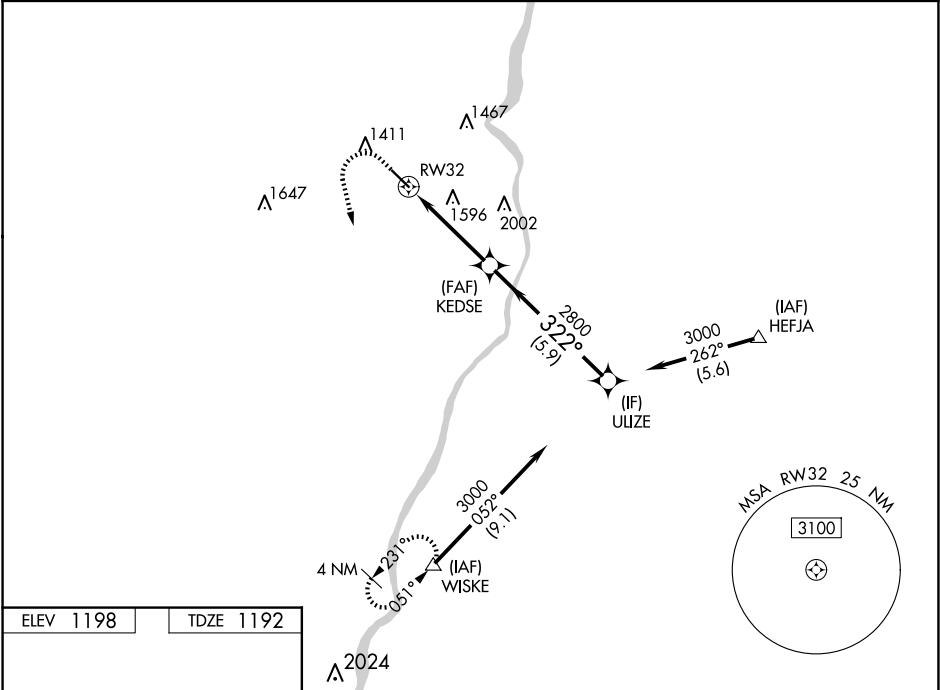
WAAS CH 58339 W32A	APP CRS 322°	Rwy Idg TDZE Apt Elev	5001 1192 1198
----------------------------------------	------------------------	-----------------------------	-------------------------------------------



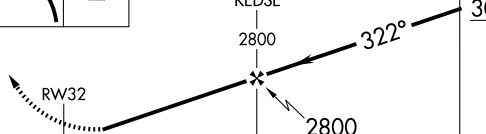

RNAV (GPS) RWY 32

GEARY A BATES/JEFFERSON COUNTY AIRPARK (2G2)

RNP APCH.	MISSED APPROACH: Climb to 2000 then climbing left turn to 3100 direct WISKE and hold.
<div><div></div><div></div></div> <div>Rwy 32 helicopter visibility reduction below ¾ SM NA. Baro-VNAV NA when using Wheeling altimeter setting. For uncompensated Baro-VNAV systems, LNAV/VNAV NA below -17°C or above 54°C. When local altimeter not received, use Wheeling altimeter setting.</div>	

AWOS-3 121.625	HLG ASOS 127.375	PITTSBURGH APP CON 124.75 338.2	UNICOM 122.8 (CTAF) 0
--------------------------	----------------------------	-------------------------------------------	---------------------------------



2000	3100	WISKE △	VGSI and RNAV glidepath not coincident (VGSI Angle 3.60/TCH 41).		ULIZE
					3000
			GP 3.60° TCH 55		
CATEGORY	A		B	C	D
LPV DA	1519-1		327 (400-1)		NA
LNAV/ VNAV DA	1972-2½		780 (800-2½)		NA
LNAV MDA	1880-1		688 (700-1)	1880-2 688 (700-2)	NA
 CIRCLING	1880-1 682 (700-1)	1980-1 782 (800-1)	1980-2¼ 782 (800-2¼)		NA

RNAV (GPS) RWY 32

EC-2, 10 JUL 2025 to 07 AUG 2025

EC-2, 10 JUL 2025 to 07 AUG 2025