

VOR/DME MVE <b>111.6</b> Chan <b>53</b>	APP CRS <b>328°</b>	Rwy Idg <b>3715</b> TDZE <b>1045</b> Apt Elev <b>1048</b>
---	------------------------	---

VOR/DME RWY 33

GRANITE FALLS MUNI/LENZEN-ROE-FAGEN MEML FLD (GDB)

**T** When local altimeter setting not received, use Montevideo altimeter setting and increase all MDAs 40 feet, increase S-33 visibility Cat C  $\frac{1}{8}$  SM. Rwy 33 helicopter visibility below  $\frac{3}{4}$  SM NA.

**MISSED APPROACH:** Climb to 3000, then left turn via R-148 to MELL/MVE 20 DME and hold.

AWOS-3 <b>120.1</b>	MINNEAPOLIS CENTER <b>127.1 290.2</b>	GCO <b>121.725</b>	UNICOM <b>122.8 (CTAF) ①</b>
------------------------	--	-----------------------	---------------------------------

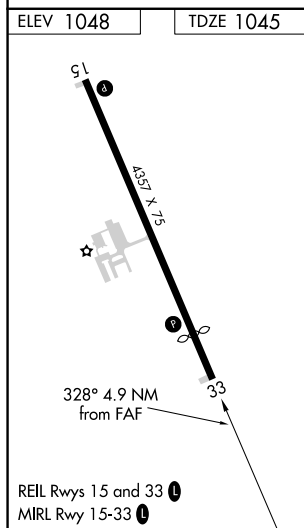
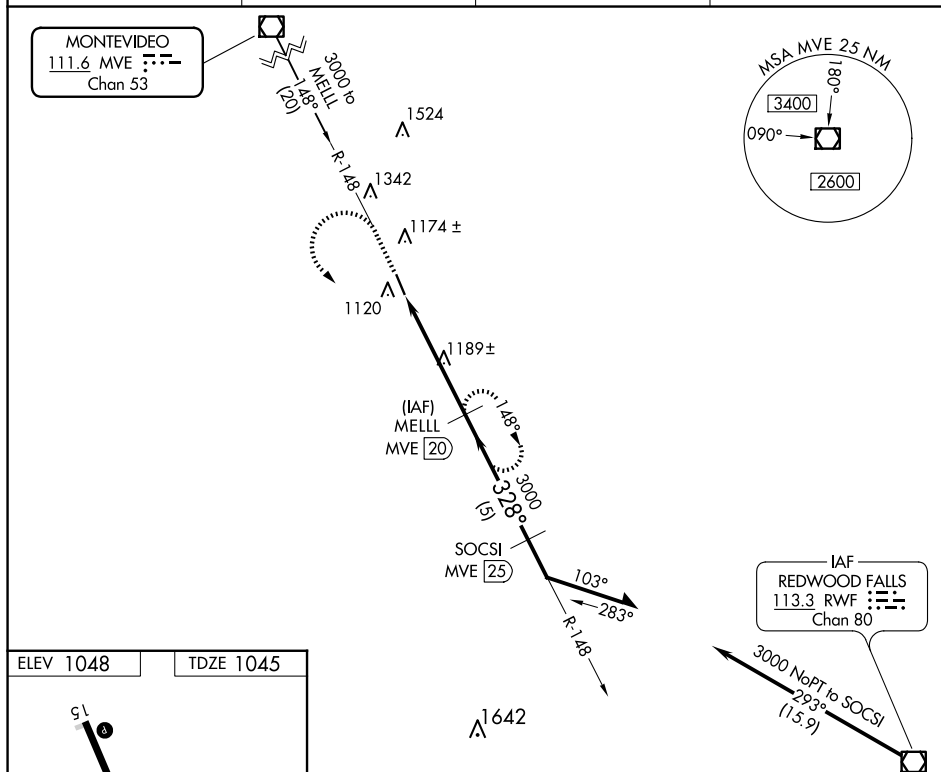


Figure 1 illustrates a flight profile with the following parameters:

- Initial altitude: 3000
- Descent to: 1480-1
- CLIMB TO: 3000
- MELLL MVE: 20
- MELLL MVE: 15.1
- Distance: 4.9 NM
- Angles: 148°, 328°
- Note: Remain within 10 NM

CATEGORY	A	B	C	D
S-33	1480-1	435 (500-1)	1480-1¼ 435 (500-1¼)	1480-1½ 435 (500-1½)
CIRCLING	1540-1 492 (500-1)	1580-1 532 (600-1)	1580-1½ 532 (600-1½)	1700-2 652 (700-2)