

WAAS CH 45635 W33A	APP CRS 330°	Rwy Ldg TDZE 7926 Apt Elev 7950
--	------------------------	---

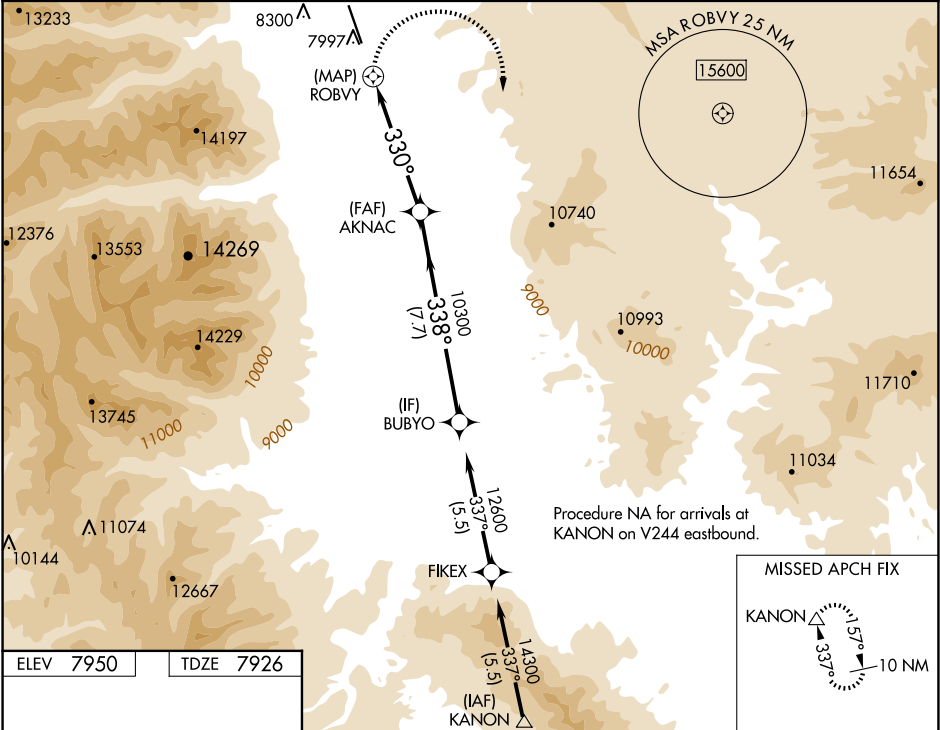
RNAV (GPS) RWY 33
CENTRAL COLORADO RGNL (A.E.J)

NA
-21°C

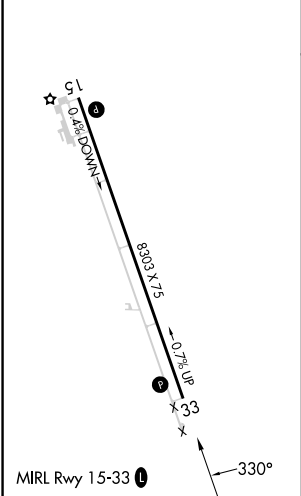
Circling NA northeast of Rwy 15-33. DME/DME RNP-0.3 NA.
When local altimeter setting not received, use Salida altimeter setting
and increase all MDA 100 feet. VDP NA with Salida altimeter setting.
#Missed approach requires minimum climb of 425 feet per NM to 14100.

MISSED APPROACH: Climbing right
turn to 16000 direct KANON and hold,
continue climb-in-hold to 16000.

AWOS-3 132.925	DENVER CENTER 119.85 363.15	UNICOM 122.8 (CTAF) 0
--------------------------	---------------------------------------	---------------------------------



ELEV 7950	TDZE 7926
-----------	-----------



16000 KANON		VGSi and descent angles not coincident (VGSi Angle 3.00/TCH 41).		BUBYO	
*LNAV only.		*1.8 NM to ROBYV		AKNAC	
ROBYV		330°		10300	
1.3		1.8 NM		3.4 NM	
7.7 NM		330°		12600	
CATEGORY		A		B	
#LP		MDA		8960-3	
LP		MDA		9840-3	
#LNAV		MDA		9300-3	
LNAV		MDA		9980-3	
CIRCLING		MDA		9980-3	

SW-1, 10 JUL 2025 to 07 AUG 2025

SW-1, 10 JUL 2025 to 07 AUG 2025