

WAAS CH <b>53636</b> <b>W04A</b>	APP CRS <b>038°</b>	Rwy Idg <b>3700</b> TDZE <b>352</b> Apt Elev <b>354</b>
--	------------------------	---

## RNAV (GPS) RWY 4

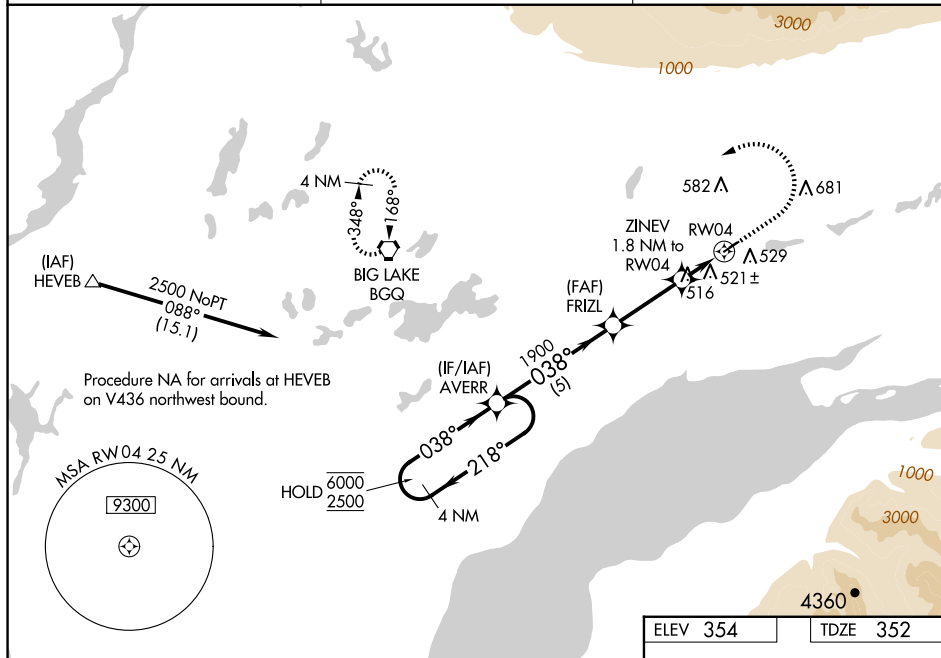
WASILLA (IYS) (PAWS)

RNP APCH.

- T** Circling NA to Rwy 4S and 22S. Baro-VNAV and VDP NA when using Palmer  
**A** altimeter setting. For uncompensated Baro-VNAV systems, LNAV/VNAV NA  
below -20°C or above 54°C. When local altimeter setting not received, use Palmer  
altimeter setting and increase all DA 46 feet, all MDA 60 feet and all visibilities ¼ mile.

**MISSED APPROACH:** Climb to 1000 then climbing left turn to 3000 direct BQG VORTAC and hold.

AWOS-3P <b>135.25</b>	ANCHORAGE APP CON <b>119.1 363.2</b>	CTAF <b>122.8 0</b>
--------------------------	---	------------------------



4 NM Holding Pattern

VGSi and RNAV glidepath not coincident (VGSi Angle 3.00/TCH 25).

1000 3000 BQ7

\*LNAV only

6000 ← 218°  
2500 → 038°

AVERR

FRIZL

1900

1900

\*960

ZINEV  
1.8 NM to RW04

\*1.3 NM to RW04

5 NM 3 NM 0.5 NM 1.3 NM

GP 3.00°  
TCH 45°

RW04

CATEGORY	A	B	C	D
LPV DA	602-3/4	250 (300-3/4)		NA
LNAV/VNAV DA	828-1 5/8	476 (500-1 5/8)		NA
LNAV MDA	780-1	428 (500-1)		NA
CIRCLING	1000-1	646 (700-1)		NA

