

| | | | |
|----------|---------|----------|------|
| WAAAS | APP CRS | Rwy ldg | 3700 |
| CH 69536 | 218° | TDZE | 354 |
| W22A | | Apt Elev | 354 |

RNAV (GPS) RWY 22

WASILLA (IYS) (PAWS)

RNP APCH.

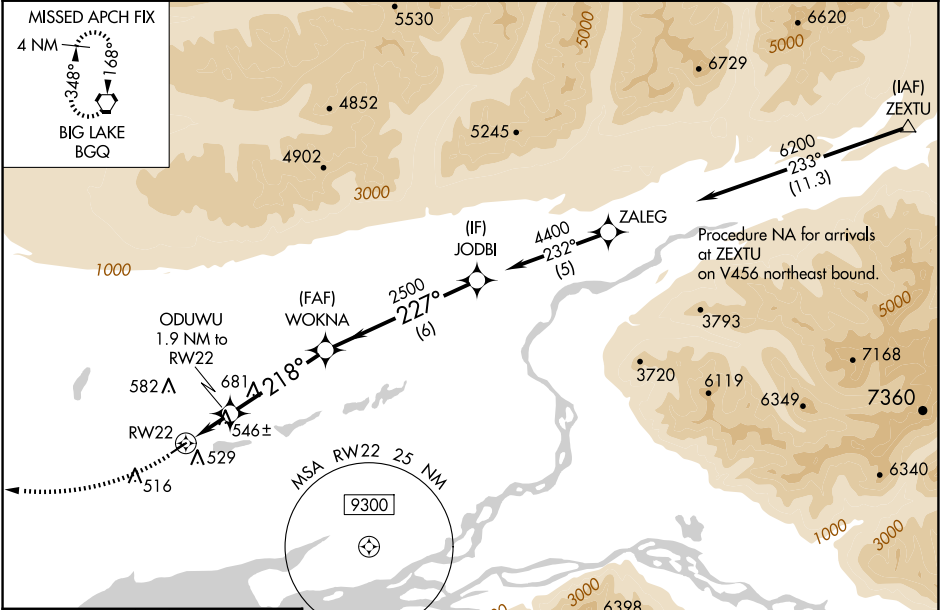
▼

⚠

Circling NA to Rwy 4S and 22S. Baro-VNAV and VDP NA when using Palmer altimeter setting. Rwy 22 helicopter visibility reduction below ¾ SM NA. For uncompensated Baro-VNAV systems, LNAV/VNAV NA below -25°C or above 54°C. When local altimeter setting not received, use Palmer altimeter setting and increase all DA 46 feet, MDA 60 feet and all visibilities ½ mile.

MISSED APPROACH:
Climb to 1000 then
climbing right turn to
3000 direct BGQ
VORTAC and hold.

| | | |
|-------------------|----------------------------------|-----------------|
| AWOS-3P 135.25 | ANCHORAGE APP CON 119.1 363.2 | CTAF 122.8 0 |
|-------------------|----------------------------------|-----------------|



| | |
|----------|----------|
| ELEV 354 | TDZE 354 |
|----------|----------|

1000 3000 BGQ

↑

↷

⬡

*LNAV only

ODUWU 1.9 NM to RW22

*1.2 NM to RW22

WOKNA 2500

218°

227°

4400

2500

1060*

GP 3.31°

TCH 40

1.2 NM 0.7 NM 4.1 NM 6 NM

| CATEGORY | A | B | C | D |
|--------------|--------|--------------|----|---|
| LPV DA | 604-¾ | 250 (300-¾) | NA | |
| LNAV/VNAV DA | 821-1½ | 467 (500-1½) | NA | |
| LNAV MDA | 800-1 | 446 (500-1) | NA | |
| CIRCLING | 1000-1 | 646 (700-1) | NA | |