

## CILAC THREE DEPARTURE (OBSTACLE) (RNAV)

ANCHORAGE CENTER  
125.35 346.3  
CTAF  
122.9

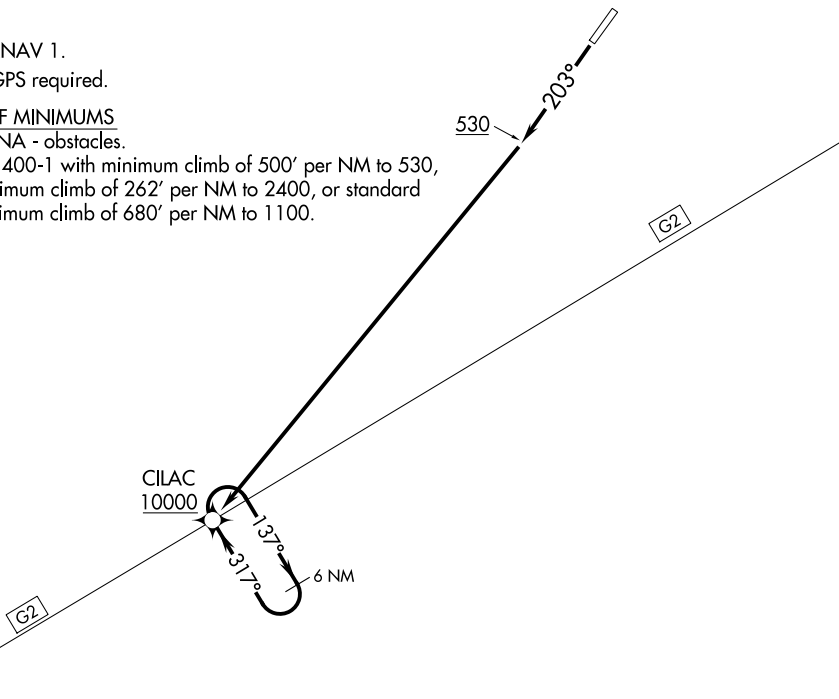
NOTE: RNAV 1.

NOTE: GPS required.

## TAKEOFF MINIMUMS

Rwy 2: NA - obstacles.

Rwy 20: 400-1 with minimum climb of 500' per NM to 530, then minimum climb of 262' per NM to 2400, or standard with minimum climb of 680' per NM to 1100.



## TAKEOFF OBSTACLE NOTES

Rwy 20: Tree 52' from DER, 264' right of centerline, 50' AGL/67' MSL.

Trees beginning 83' from DER, 17' right of centerline, up to 50' AGL/99' MSL.

Trees beginning 103' from DER, 190' left of centerline, up to 50' AGL/50' MSL.

Trees beginning 549' from DER, 86' left of centerline, up to 50' AGL/64' MSL.

Vehicle 1567' from DER, 156' left of centerline, 15' AGL/64' MSL.

Tree 1690' from DER, 54' left of centerline, 50' AGL/70' MSL.

Trees beginning 1937' from DER, 35' right of centerline, up to 50' AGL/149' MSL.

Tree 2385' from DER, 125' left of centerline, 50' AGL/90' MSL.

Tree 2633' from DER, 301' left of centerline, 50' AGL/100' MSL.

Trees beginning 2666' from DER, 303' right of centerline, up to 50' AGL/249' MSL.

Tree 2831' from DER, 21' left of centerline, 50' AGL/113' MSL.

Trees beginning 2850' from DER, 322' left of centerline, up to 50' AGL/149' MSL.

Trees beginning 4867' from DER, 1170' left of centerline, up to 50' AGL/349' MSL.

NOTE: Chart not to scale.

## DEPARTURE ROUTE DESCRIPTION

**TAKEOFF RUNWAY 20:** Climb heading 203° to 530, then climb direct CILAC to at/above 10000, continue climb in CILAC holding pattern to at/above 10000 before proceeding on assigned route.