

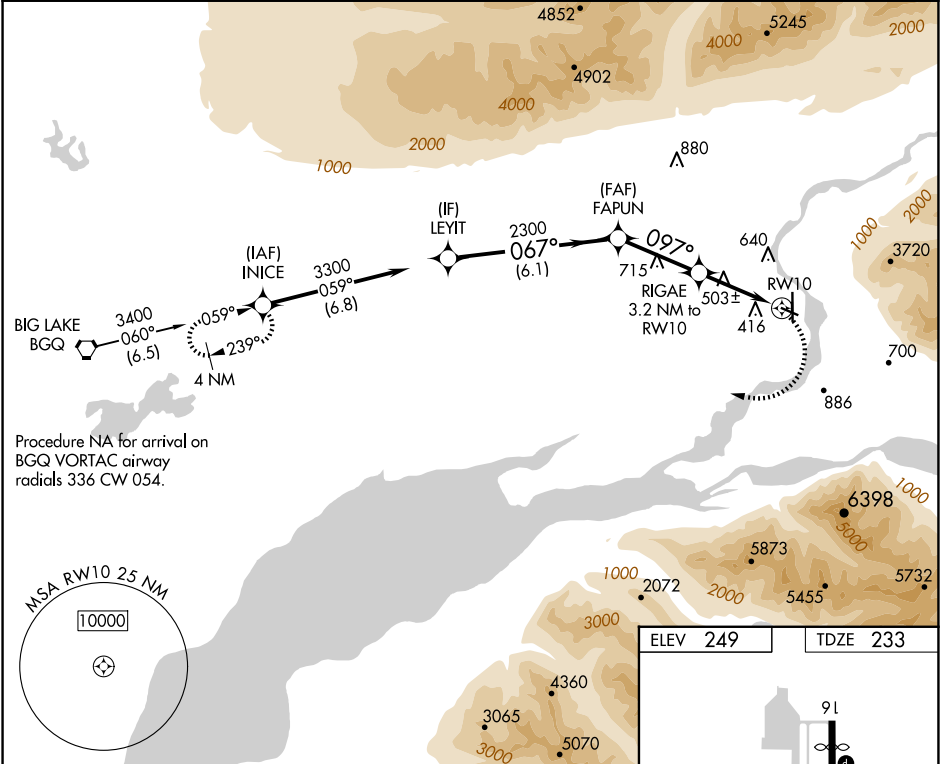
WAAS CH 40425 W10A	APP CRS 097°	Rwy Idg TDZE Apt Elev	3616 233 249
--	------------------------	-----------------------------	---

RNAV (GPS) RWY 10

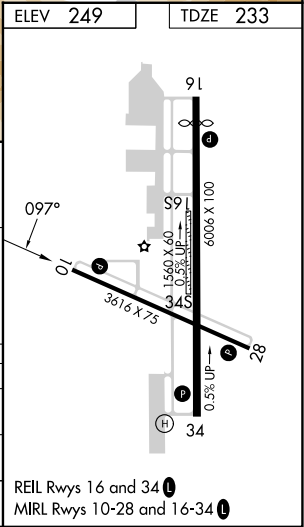
WARREN "BUD" WOODS PALMER MUNI (PAQ) (PAAQ)

RNP APCH.	MISSED APPROACH: (Do not exceed 185K until INICE) Climbing right turn to 3600 direct INICE and hold.
<p>⚠ Circling NA northeast of Rwy 16-28. Procedure NA at night. Rwy 10 helicopter visibility reduction below 1 SM NA.</p>	

AFIS 134.75	ANCHORAGE APP CON 118.6 290.5	PALMER RADIO 123.6 (CTAF) 0 122.4
-----------------------	---	---



LEYIT				VGSI and descent angles not coincident (VGSI Angle 3.00/TCH 27).				INICE			
3300				067°				3600			
				2300				097°			
				3.00°				3.2 NM to RW10			
				TCH 40				RW10			
				1300							
				6.1 NM				3.2 NM			
CATEGORY	A		B		C		D				
LP MDA	760-1	527 (600-1)			760-1½	527 (600-1½)					
LNAV MDA	820-1	587 (600-1)			820-1⅝	587 (600-1⅝)					
CIRCLING	860-1 611 (700-1)	940-1 691 (700-1)			1300-3	1051 (1100-3)					



RNAV (GPS) RWY 10